

MEDIAJET – Connection Kit MARKEM-IMAJE 9232/9410/9450

Operation Instructions V03 for inkjet printhead installation

Document Change History

Vers.	Status:	Name:	Date:	Change:
V00	Released	n/a	28.02.2013	Document issued.
V01	Released	n/a	05.03.2015	New printer type added.
V02	Released	n/a	02.06.2015	Picture exchange, compatibility.
V03	Released	n/a	08.06.2018	Printhead holder added.

Table of Contents

1	Introduction-----	1
2	Required Accessories and Documentation -----	1
3	Mount printhead onto MEDIAJET-----	2
4	Plugging of Interface cable -----	3
5	Imprint-----	3

1 Introduction

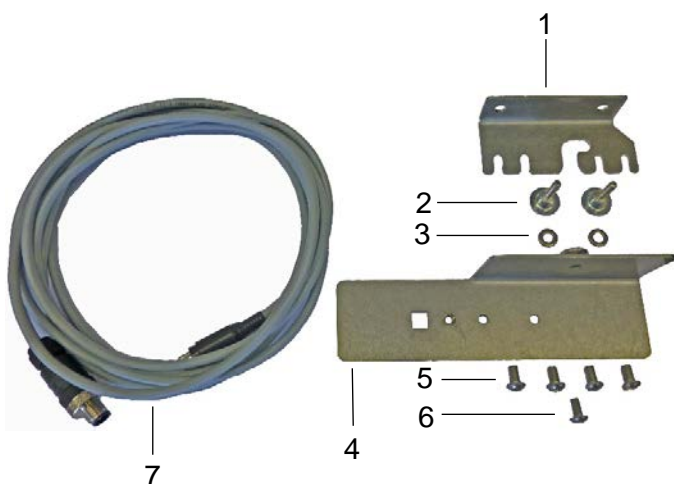
This document describes installation and connection of the MARKEM-IMAJE (MI) inkjet printhead to the MEDIAJET (MJ) dish filler. The following MI types are supported:

- MARKEM-IMAJE 9232
- MARKEM-IMAJE 9410
- MARKEM-IMAJE 9450

Before starting with the installation, please carefully read MJ and the corresponding MI operating instructions. Please note that MJ units manufactured before March 2013 (serial numbers below 10313569/11313248) are not compatible with MI 9232/9410/9450 inkjet printers.

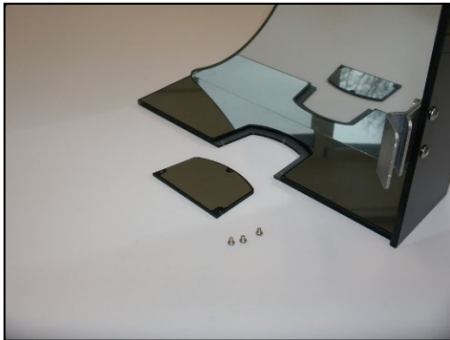
2 Required Accessories and Documentation

The components listed below are required to connect the inkjet printer to MEDIAJET. Components available from INTEGRA Biosciences:

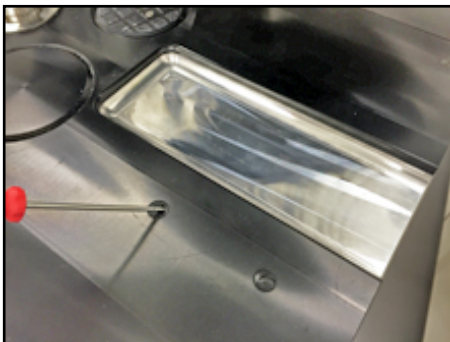


- MEDIAJET Dish Filler (Part no. 103005/103006/113000/113001/113002)
- MJ Operating Instructions (Part no. 103950)
- MJ connecting kit (Part no. 103091) for MARKEM-IMAJE 9232/9410/9450:
 - 1 Mounting bracket (Mb)
 - 2 Knurled head screw M5x16 (2x)
 - 3 Washer M6 (2x)
 - 4 Printhead holder (Phh) (103483)
 - 5 Lens head screw M6x10 (4x); 2x for Mb, 2x for Phh;
 - 6 Lens head screw M5x10 (to fix Phh on Maintenance tray)
 - 7 Interface cable MJ to MI (Part no. 103081)
 - 8 This document (Part no. 103980)

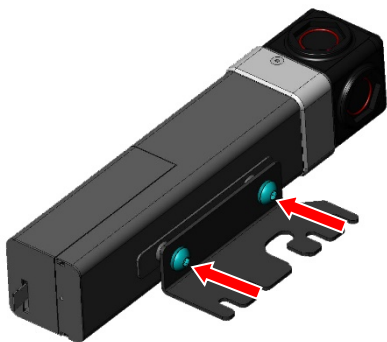
3 Mount printhead onto MEDIAJET



Remove the slot cover on the back side of the MEDIAJET Plexiglas safety cover.

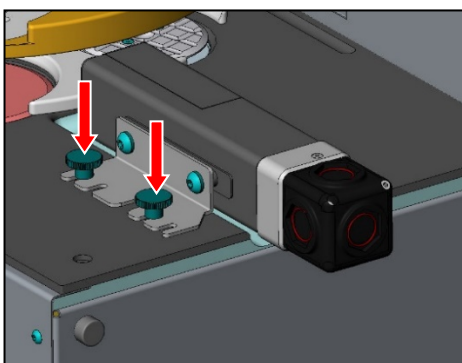


Spear and remove the two screw caps (Part no. 103628) which cover the threads of the printhead fixing points using a thin screwdriver.



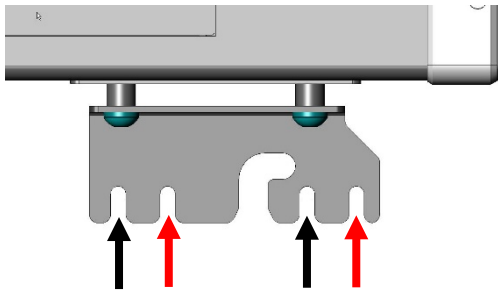
Fix the Mounting bracket (1) to the MI 9232/9410 inkjet printhead using the two M6x10 lens head screws (3) and the two Washers (4).

Note: Fix the Mounting bracket (1) so that the head points slightly downward. This allows the vertical adjustment of the inkjet stream to the Petri dish side wall.

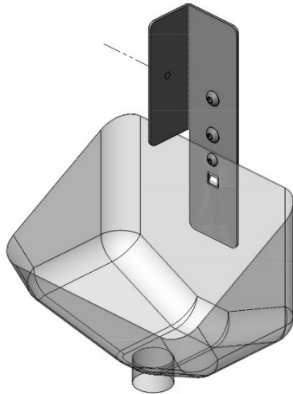


Fix the printhead onto the MEDIAJET using the two knurled head screws (2).

INTEGRA



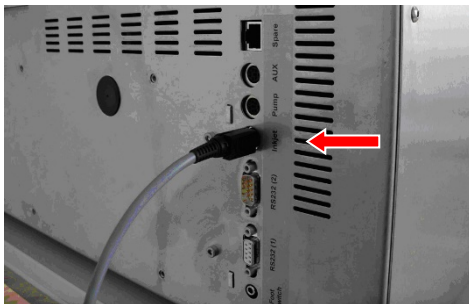
Use the anterior slots (black arrows) when printing on 90 mm Petri dishes or use the posterior slots (red arrows) when printing on 60 mm Petri dishes to fix the Mounting bracket (1) onto the MEDIAJET.



If you have a Maintenance tray to rinse the printhead, mount Printhead holder (103483) with Lens head screw M5x10, as shown beside. Mount the Printhead holder with the delivered Lens head screw M6x10 (2x) or others on a stand or a wall.

For rinsing insert the printhead in the Printhead holder above the tray.

4 Plugging of Interface cable



Insert the Mini-DIN 8 poles plug of the Interface cable (103081) into the socket labeled with INKJET on the rear panel of the MEDIAJET.

Insert the plug at the other end of the interface cable according to the MI Operating Instructions.

5 Imprint

© 2018 INTEGRA Biosciences AG

All rights relating to this documentation reserved. INTEGRA Biosciences AG especially reserves the rights of duplication, processing, translation and display format. Any reproduction of parts or the entire documentation, or storage thereof on electronic media, or processing or dissemination thereof, requires the prior written consent of INTEGRA Biosciences AG.

This Installation Instructions has the part number 103980; the version is V03.

Manufacturer

INTEGRA Biosciences AG
CH-7205 Zizers, Switzerland
T +41 81 286 95 30
F +41 81 286 95 33

info@integra-biosciences.com
<http://www.integra-biosciences.com>