

INTEGRA



MAG and HEATMAG

Operating Instructions



Declaration of Conformity

INTEGRA Biosciences AG – 7205 Zizers, Switzerland

declares on its own responsibility that the devices

Description	Models
MAG/HEATMAG	4900, 4901
Mains adapter	137710

comply with:

EU Directives	Scope	Date effective
2014/35/EU	Low voltage directive (LVD)	20.04.2016
2014/30/EU	Electromagnetic compatibility (EMC)	20.04.2016
2012/19/EC	Waste electrical and electronic equipment (WEEE)	14.02.2014
2011/65/EC	Restriction of hazardous substances (RoHS)	03.01.2013

EU Regulations	Scope	Date effective
1907/2006	Registration, evaluation, authorisation and restriction of chemicals (REACH)	01.06.2007
2019/1021	Regulation on persistent organic pollutants	20.06.2019
2019/1782	External power supply efficiency	01.04.2020

EU Standards	Scope
EN 9001:2015	Quality Management
EN 61010-1:2020	Safety general laboratory equipment
EN 61326-1:2013	Electromagnetic compatibility laboratory equipment
EN 61010-2-010:2020	Safety heating devices
EN 60950-1:2013	Safety information technology equipment
EN 62368-1:2021	Safety information technology equipment
EN 50364:2019	Human exposure to electromagnetic fields

GBR Regulations	Scope	Date effective
S.I. 2016/1101	Electrical equipment safety	08.12.2016
S.I. 2016/1091	Electromagnetic compatibility (EMC)	08.12.2016
S.I. 2013/3113	Waste electrical and electronic equipment (WEEE)	01.01.2019
S.I. 2012/3032	Restriction of hazardous substances (RoHS)	02.01.2013

GBR Standards	Scope
BS 61010-1:2010	Safety general laboratory equipment
BS 62368-1:2020	Safety information technology equipment
BS 63000:2018	Restriction of hazardous substances (RoHS)

USA Regulations	Scope	Date effective
47 CFR Part 15 (FCC)	Electromagnetic compatibility (EMC)	
10 CFR Part 430	External power supply efficiency (CEC VI)	
17 CFR Parts 240 & 249b	Dodd frank "Conflict minerals"	
27 CCR Parts 25102-27001	Proposition 65: The safe drinking water and toxic enforcement act	
TSCA 40 CFR Part 751	Toxic substances control act	

USA Standards	Scope
UL 61010-1:2012	Safety general laboratory equipment
UL 61010-2:2019	Safety heating devices

CAN Standards	Scope
CSA-C22.2 No. 61010-1	Safety general laboratory equipment
CSA-C22.2 No. 61010-2-10	Safety heating devices

CHN Regulations	Scope	Date effective
AQSIQ Order 5 /2001	(CCC) safety and EMC requirements for electrical equipment	01.08.2003
Order 32/2016	Restriction of hazardous substances (RoHS)	01.07.2016

CHN Standards	Scope
GB4943.1-2011	Information technology equipment safety
GB9254-2008	Information technology equipment radio disturbance
GB17625.1-2012	EMC limits for harmonic current emissions
SJ/T 11364-2014	Restriction of hazardous substances (RoHS)

MAG/HEATMAG – Declaration of conformity

JPN Regulations	Scope	Date effective
PSE (Denan) Law	Electrical appliance and material safety law	01.01.2014
JIS C1010-1:2019	Safety general laboratory equipment	

KOR Regulations	Scope	Date effective
KC 61010-1	Safety general laboratory equipment	
KC 61010-2-010	Safety heating devices	
KC 62368	Safety information technology equipment	

ANZAC Regulations	Scope	Date effective
AS 61010-1:2003	Safety general laboratory equipment	
IEC 61010-2-010:2019	Safety heating devices	
AS/NZS 62368.1:2022	Safety information technology equipment	

Zizers, 2023-12-08


Urs Hartmann
CEO


Daniela Gross
Head of Corporate Quality

Table of Contents

Chapter 1	Introduction	
	1.1 Symbols used	7
	1.2 Intended use	7
	1.3 Safety notes	8
Chapter 2	Description of the device	
	2.1 Scope of delivery	9
	2.2 Overview of MAG/HEATMAG module	9
Chapter 3	Installation	
	3.1 Operating environment	11
	3.2 Setting up	11
	3.3 Inserting the labware adapter	11
	3.4 Changing the magnetic array (MAG only)	11
	3.5 Installing the communication module	12
	3.6 Connection with ASSIST PLUS	12
Chapter 4	Operation	
	4.1 Turn on/off the device	13
	4.2 Changing parameters via PC	13
	4.3 Changing parameters via app	15
	4.4 Running stand alone	15
	4.5 Running on ASSIST PLUS	16
	4.6 Updating firmware	16
Chapter 5	Maintenance	
	5.1 Cleaning	17
	5.2 Decontamination	17
	5.3 Servicing	18
	5.4 Equipment disposal	18
Chapter 6	Technical data	
	6.1 Environmental conditions	19
	6.2 Specification of the device	19

Chapter 7 Accessories

7.1 Accessories20

Imprint21

1 Introduction

These operating instructions contain all the information required for installation, operation and maintenance of the MAG and HEATMAG modules. This chapter informs about the symbols used in these operating instructions, the intended use of MAG/HEATMAG and the general safety instructions.

1.1 Symbols used

The operating instructions specifically advise of residual risks with the following symbols:

**WARNING**

This safety symbol warns against hazards that could result in injury. It also indicates hazards for machinery, materials and the environment. It is essential that you follow the corresponding precautions.

**CAUTION**

This symbol cautions against potential material damage or the loss of data in a microprocessor controller. Follow the instructions.

**NOTE**

This symbol identifies important notes regarding the correct operation of the device and labor-saving features.

The module is marked with the following symbol:

**ATTENTION HOT**

Do not touch the heat plate (4) or the labware adapter during and after the heat cycles. They can reach a temperature of up to 110 °C. Risk of second-degree burns.

1.2 Intended use

This is a general-purpose laboratory instrument for use in research only. Any use of this instrument in a medical or IVD setting is under the sole responsibility of the user.

This product may only be operated in a secure, protected network with validated, trustworthy clients. The operator must ensure that network security measures are always up-to-date and state-of-the-art. This product may not be directly exposed to the internet.

If the MAG/HEATMAG modules are used in a manner not specified by INTEGRA Biosciences, the protection provided by the MAG/HEATMAGs may be impaired.

MAG/HEATMAG modules are motor driven, adjustable magnets for magnetic bead separation. They have a SBS footprint and can be used as a stand-alone device, e.g. on MINI 96 and VIAFLO 96/384, or be integrated into the ASSIST PLUS pipetting robot. In addition, the HEATMAG provides a heating function.

1.3 Safety notes

MAG/HEATMAG comply to the recognized safety regulations and are safe to operate. MAG/HEATMAG should only be operated when in perfect condition and while observing these operating instructions.

The device may be associated with residual risks if it is used or operated improperly by untrained personnel. Any person operating MAG/HEATMAG must have read and understood these operating instructions, and particularly, the safety notes, or must have been instructed by supervisors so that safe operation of the device is guaranteed.

**WARNING**

- Do not use MAG/HEATMAG near flammable material or in explosive areas. Also, do not pipette highly flammable liquids such as acetone or ether.
- When handling dangerous substances, comply with the material safety data sheet (MSDS) and with all safety guidelines such as the use of protective clothing and safety goggles.

**CAUTION**

- Do not modify MAG/HEATMAG in any way. Repairs may only be performed by INTEGRA Biosciences or by an authorized after-sales service member.
- Parts may be replaced with original INTEGRA Biosciences parts only.

**NOTE**

- Prolonged exposure of MAG/HEATMAG to UV-light can cause discoloration and/or yellowing of MAG/HEATMAG housing. However, this will not affect the performance of the device in any way.

Regardless of the listed safety notes, additional applicable regulations and guidelines of trade associations, health authorities, trade supervisory offices, etc. must be observed.

Please visit our website www.integra-biosciences.com on a regular basis for up to date information regarding REACH classified chemicals contained in our products.

2 Description of the device

2.1 Scope of delivery

- MAG/HEATMAG magnetic module
- Mains adapter
- USB-C to USB-A cable
- USB-C to AUX cable
- Cable clips
- Quick start guide

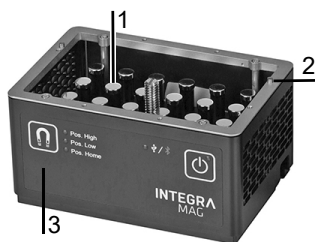


CAUTION

Verify the scope of delivery when unpacking the device and check for potential transportation damage. Do not operate a device that is damaged, instead contact your local INTEGRA representative.

2.2 Overview of MAG/HEATMAG module

MAG



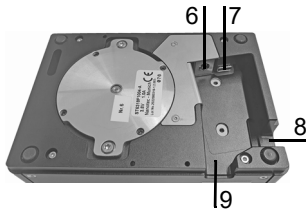
- 1 **Magnet array**, exchangeable (MAG only)
- 2 **Pin**, on both sides for labware adapter positioning
- 3 **Touch panel**

HEATMAG



with the following additional functions:

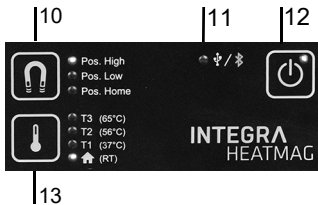
- 4 **Heat plate**, with warning symbol risk of burning
- 5 **Fan**, slots on both sides for cooling

Bottom view

- 6 **Socket for mains adapter**
- 7 **USB-C port**, to connect PC or ASSIST PLUS
- 8 **Cable opening** for portrait orientation
- 9 **Cable opening** for landscape orientation

Touch panel

Active icons light up.



- 10 **Magnet button**, to set heights
- 11 **Status LED**, for USB connection white, for Bluetooth connection blue and in error case red
- 12 **On/Off button**, lights if on
- 13 **Temperature button**, to set temperature (HEATMAG only)

3 Installation

3.1 Operating environment

The MAG/HEATMAG have been designed for use in a laboratory. They shall be operated in a dry and dust-free location with a temperature of 5–40 °C and a maximal (non-condensing) relative humidity of 80 %.

3.2 Setting up

The MAG/HEATMAG modules must be set up on a cleaned, dry and horizontal surface. For HEATMAG allow at least 5 mm beside the ventilation slots (5) for free air circulation.

Connect the supplied mains adapter to the socket (6) on the bottom of the MAG/HEATMAG and connect the adapter via a 3-core cable to the electricity mains.

**WARNING**

Turn off and unplug the modules before moving to prevent unintentional height movement of the magnet. Risk of pinching fingers.

3.3 Inserting the labware adapter

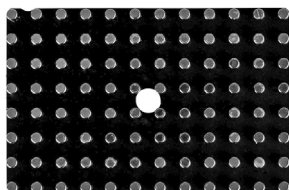
Put the adapter on top of the MAG/HEATMAG. The correct alignment is given by the pins on both sides (2).

**WARNING**

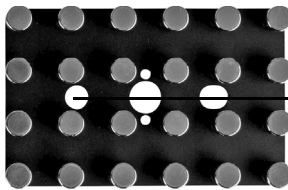
With the HEATMAG in particular, make sure that the clean adapter sits flat on the heat plate so that the temperature can be transferred well and the plate does not overheat.

3.4 Changing the magnetic array (MAG only)

On MAG, you can install different magnetic arrays:



Magnetic array for 384 well PCR plates



Magnetic array for 96 well PCR plates or 24 tubes

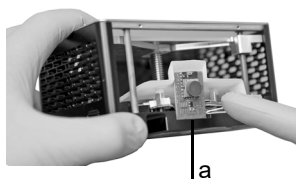
the notches ensure the proper alignment



Move the magnet to the high position by pressing the magnet button (10).

Insert the magnetic array with the notches on the pins of the MAG.

3.5 Installing the communication module

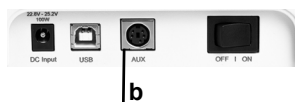


Use a Torx screwdriver to loosen the 4 screws on the back of the module and remove the cover plate.

Insert the communication module (#4222) into the socket near the bottom of the device (a). Position it carefully in the lowest position and press it to secure firm.

Replace the cover plate and tighten the 4 screws.

3.6 Connection with ASSIST PLUS



Plug the USB-C to AUX cable into the USB port (7) on the bottom of the MAG/HEATMAG and connect it to the AUX aux port (8-pin plug) of the ASSIST PLUS (b). Put the MAG/HEATMAG on the deck (position C recommended).



NOTE

Only ASSIST PLUS with 8-pin AUX port (serial number ≥ 21011555) supports connection to MAG/HEATMAG.

4 Operation

4.1 Turn on/off the device

Turn on:

Press the On/Off button (12) on the touch panel to turn on MAG/HEATMAG. The LED illuminates and the module initializes.



WARNING

Keep your hands away from the top of MAG/HEATMAG during initialization. Risk of pinching fingers.



WARNING

Only heat the HEATMAG with a labware adapter attached. Risk of overheating the heating plate.

Turn off:

To turn off MAG/HEATMAG, press and hold the On/Off button (12) until it beeps.



NOTE

To save heating energy of HEATMAG, always to turn off the device if it is not used again within 5 minutes.

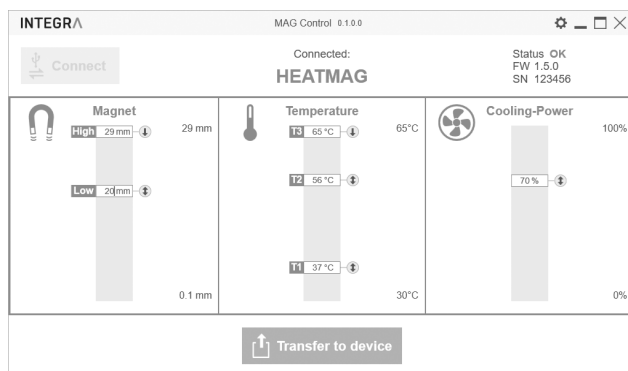


NOTE

It is recommended to move the magnet to the home position before storing the module.

4.2 Changing parameters via PC

You can adapt the default heights, temperatures and cooling-power of the MAG/HEATMAG via a PC. Download the MAG Control software from the INTEGRA website under Support - [Download center](#) (English only). Connect the USB cable to the USB-C port (7) on the bottom of the MAG/HEATMAG and connect it to the PC.



Start the intuitive MAG Control software.

Press the “Connect” button to connect the desired MAG/HEATMAG.

Move the slider up and down to adjust the magnetic heights to your specific applications. The home position cannot be changed. The following heights are recommended:

Labware	Magnet height	
Adapter for 1.5 ml tubes	<500 μ l	>500 μ l
	<p>21 mm Pos. Low</p>	<p>29 mm Pos. High</p>
Adapter for 96 well PCR plates	<100 μ l	>100 μ l
	<p>24 mm Pos. Low</p>	<p>29 mm Pos. High</p>
Adapter for 384 well PCR plates		<p>29 mm Pos. High</p>

If a HEATMAG is connected, set the temperatures T1, T2, and T3. The optimal temperature values depend on used liquids, volumes, adapters and labware. The ambient temperature cannot be adapted. If required, also set the cooling power.

**NOTE**

If the cooling power is reduced, the cooling time is extended.

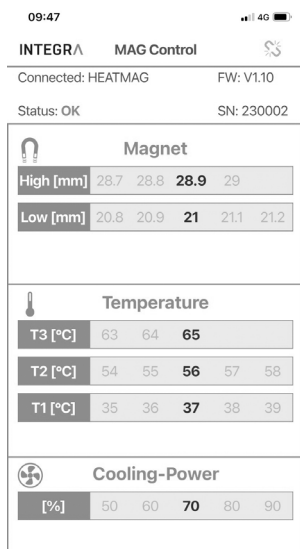
Press the “Transfer to device” button to save the adapted parameters on the connected MAG/HEATMAG.

**NOTE**

*Stand alone remote control of MAG/HEATMAG via PC is not possible.
If you change default temperatures, they will no longer match those printed on the touch panel.*

4.3 Changing parameters via app

A communication module must be installed (3.5) on your MAG/HEATMAG to set parameters via the MAG Control app. Download the MAG Control app, which you can find in the App Store, onto your smartphone.



Press and hold the magnetic button (10) and the On/Off button (12) of the MAG/HEATMAG simultaneously until it beeps. The status LED (11) flashes blue.

Open the app press the search button. Select your module. The status LED (11) lights permanently blue, the devices are paired.

Set the parameters and press Transfer to device.

 Transfer to device



NOTE

If you change default temperatures, they will no longer match those printed on the touch panel.

4.4 Running stand alone

The MAG/HEATMAG must not be connected to other devices. Press the appropriate magnet height (10) or temperature button (13).

With its SBS footprint, the MAG/HEATMAG fits on the plate holders of VIALFO 96/384 or MINI 96.

4.5 Running on ASSIST PLUS

Integration of the MAG/HEATMAG modules with the ASSIST PLUS pipetting robot (3.6) allows fully automated processing of bead purification protocols. Use the VIALAB pipetting automation software to create multi-step programs on a PC and transfer them to the pipette used on ASSIST PLUS. Please refer to www.integra-biosciences.com/download-vialab and VIALAB operating instructions for more information.

**NOTE**

In connection with ASSIST PLUS, only remote control of MAG/HEATMAG is possible.

4.6 Updating firmware

Download the latest firmware from the INTEGRA website under Support - [Download center](#). Connect the MAG/HEATMAG to the USB port of your PC. From the VIALINK software go to the Firmware tab and install the latest firmware.

5 Maintenance

**WARNING**

MAG/HEATMAG maintenance should be carried out on a clean and dust free workplace. Always turn off power and disconnect MAG/HEATMAG from the mains and wear gloves when carrying out maintenance work.

**WARNING**

Before starting any maintenance work, allow the HEATMAG to cool down to room temperature.

MAG/HEATMAG modules are precision instruments, therefore a proper maintenance routine must be followed to ensure safe and reliable operation. Cleaning is recommended if MAG/HEATMAG has been contaminated or if it has come in contact with corrosive liquids.

5.1 Cleaning

The materials used on the exterior of MAG/HEATMAG support regular cleaning intervals. Clean the external components with a lint-free cloth lightly soaked with mild soap solution in distilled water or with a 70 % dilution of Isopropyl or Ethanol. Never use Acetone or other solvents.

**WARNING**

Do not spray cleaning solution directly onto the MAG/HEATMAG as this can potentially damage internal electronics.

If liquid ever enters the internals of MAG/HEATMAG, please contact your service technician.

**CAUTION**

MAG/HEATMAG can only be completely disassembled by trained service personnel.

5.2 Decontamination

If the surface of MAG/HEATMAG has been in contact with biohazardous material, it must be decontaminated in accordance to good laboratory practice. Wipe the clean surface with a lint-free cloth, lightly soaked e. g. with the following disinfectants:

- Ethanol 70 %
- Microcide SQ 1:64
- Glutaraldehyde solution 4 %
- Virkon solution 1-3%

Follow the instructions provided with the disinfectants.

5.3 Servicing

For any service or repairs, please contact your local service technician.

**WARNING**

If working with infectious materials, e. g. human pathogens, MAG/HEATMAG needs to be decontaminated before sending them to service and the declaration on the absence of health hazards must be signed. This is necessary to protect service personnel.

5.4 Equipment disposal



MAG/HEATMAG must not be disposed of with unsorted municipal waste. Do not dispose of MAG/HEATMAG in a fire.



Dispose of MAG/HEATMAG in accordance with the laws and regulations in your area governing disposal of devices. In certain regions and countries, e.g. in EU member states, the distributor is obliged to take back this product free of charge at the end of life. Please contact your local distributor for more details.

6 Technical data

6.1 Environmental conditions

	Operation
Temperature range	5–40 °C
Humidity range	Max. rel. humidity 80% for temperatures up to 31 °C, decreasing linearly to 50% rel. humidity at 40 °C.
Altitude range	<2000 m

6.2 Specification of the device

Electricity supply	Mains adapter input: 100–240 V, 50/60 Hz Device input: 24 V, 120 W
Dimensions (H x D x W)	MAG: 70 mm x 88.5 mm x 133 mm HEATMAG: 73 mm x 88.5 mm x 133 mm
Weight	MAG: 1 kg HEATMAG: 1.1 kg
Magnet heights	0 - 29.0 mm, settable in 0.1 mm steps. Recommended values set at factory: Pos. High (mm): 29 Pos. Low (mm): 21 Home: 0
Temperature range	Ambient (measured) to 65 °C. Recommended values set at factory: <ul style="list-style-type: none"> • T3 (°C): 65 • T2 (°C): 56 • T1 (°C): 37 • Ambient
Temperature uniformity	± 1 °C
Temperature precision	± 2 °C
Cooling power range	0% to 100% Recommended value set at factory: 70%
Material of surfaces	Housing: Stainless steel, anodized aluminum

7 Accessories

7.1 Accessories

Adapters and platform modules	Part no.
Adapter for 1.5 ml tubes, format 4 x 6 (MAG/HEATMAG)	4905
Adapter for 96 well PCR plates (MAG/HEATMAG)	4906
Adapter and magnetic array for 384 well PCR plates (MAG)	4908
COLDPLATE for cooling and heating, integration ready	4950
BIOSHAKES 3000 for shaking, integration ready	4951
BIOSHAKES 3000-T for heating and shaking, integration ready	4952
Adapter for flat bottom plates (COLDPLATE/BIOSHAKES)	4953
Adapter for 96 well PCR plates (COLDPLATE/BIOSHAKES)	4954
Adapter for 384 well PCR plates (COLDPLATE/BIOSHAKES)	4955
Adapter for 24 x 1.5 ml or 15 x 0.5 ml tubes (COLDPLATE/BIOSHAKES)	4956
Adapter for 2.2 ml deep well plates (COLDPLATE/BIOSHAKES)	4961
Adapter for 2.0 ml screw tubes, format 4 x 6 (COLDPLATE/BIOSHAKES)	4962
Labware Pedestal, +50 mm	4963

General	Part no.
Communication module for MAG/HEATMAG modules	4222
ASSIST PLUS pipetting robot	4505

Imprint

© 2024 INTEGRA Biosciences AG

All rights to this documentation are reserved. In particular the rights of reproduction, processing, translation and the form of presentation lie with INTEGRA Biosciences AG. Neither the complete documentation nor parts thereof may be reproduced in any way, or stored and processed using electronic media or distributed in any other way without the written consent of INTEGRA Biosciences AG.

Every effort has been made to provide complete and accurate information in this manual. Although this manual should contain a specifically labeled warranty notice for the product, INTEGRA Biosciences AG makes no representations or warranties with respect to the contents of this manual and reserves the right to change this manual without notice if and when improvements are made.

INTEGRA Biosciences AG shall not be liable for any loss, damage, repair costs, incidental or consequential damages of any kind, whether based on express or implied warranty, contract, omission or strict liability, arising in connection with the design, development, installation or use of the products.

INTEGRA Biosciences AG aims to provide reliable and accurate data and documentation. If you find a discrepancy, we would be grateful for your assistance and ask you for email us at info@integra-biosciences.com.

This operating instruction manual has part number 137950, the version is V00. It applies as of:

Serial number	230001 or higher
(Firmware) FW version	V1.13 or higher

of MAG/HEATMAG modules until a newer revision is released.

VIALAB and GRIPTIPS are trademarks of INTEGRA Holding, Switzerland.

Manufacturer and customer service

Your local INTEGRA Biosciences representative, further information, and operating instructions in other languages can be found at www.integra-biosciences.com or are available on request info@integra-biosciences.com.

Manufacturer

INTEGRA Biosciences AG

Tardisstrasse 201
CH-7205 Zizers, **Switzerland**
T +41 81 286 95 30
info-ch@integra-biosciences.com

INTEGRA Biosciences Corp.

22 Friars Drive
Hudson, NH 03051, **USA**
T +1 603 578 5800
info-us@integra-biosciences.com

Direct sales country

Integra Biosciences PTY Ltd

Unit 55, 193-203 South Pine Road
Brendale QLD 4500, **Australia**
T +617 3497 5800
info-au@integra-biosciences.com

INTEGRA Biosciences (Shanghai) Co., Ltd.

Room 1110, No. 515 Huanke Road
Shanghai 201315, **China**
T +86 21 5844 7203
info-cn@integra-biosciences.com

INTEGRA Biosciences Nordic ApS

Vallensbækvej 22A 3TV
Brøndby 2605, **Denmark**
T +45 3173 5373
info-nordic@integra-biosciences.com

INTEGRA Biosciences SAS

8 avenue du Fief
95310 Saint Ouen l'Aumône, **France**
T +33 1 34 30 76 76
info-fr@integra-biosciences.com

INTEGRA Biosciences Deutschland GmbH

An der Amtmannsmühle 1
35444 Biebertal, **Germany**
T +49 6409 81 999 15
info-de@integra-biosciences.com

INTEGRA Biosciences KK

Higashikanda 1-5-6, Chiyoda-ku
Tokyo, 101-0031, **Japan**
T +813 5962 4936
info-jp@integra-biosciences.com

INTEGRA Biosciences Benelux BV

Smederijstraat 2
4814 DB Breda, **Netherlands**
T +31 630 609 866
info-benelux@integra-biosciences.com

INTEGRA Biosciences Ltd

2 Rivermead Business Park
Thatcham, Berks, RG19 4EP, **United Kingdom**
T +44 1635 797 00
info-uk@integra-biosciences.com