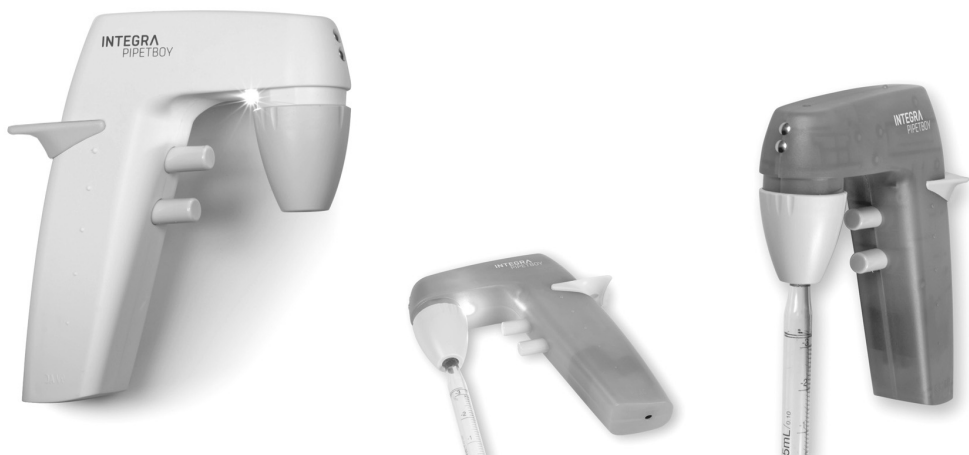


INTEGRA



PIPETBOY pro Operating instructions

156750_V13



Declaration of conformity

INTEGRA Biosciences AG – 7205 Zizers, Switzerland

declares on its own responsibility that the devices

Description	Models
PIPETBOY pro	156400, 156401, 156402, 156403, 156404
Accessories	156450, 156630, 156631, 156632, 156633, 156634, 156151

comply with:

EU Directives	Scope	Date effective
2014/35/EU	Low voltage directive (LVD)	20.04.2016
2014/30/EU	Electromagnetic compatibility (EMC)	20.04.2016
2012/19/EC	Waste electrical and electronic equipment (WEEE)	14.02.2014
2011/65/EC	Restriction of hazardous substances (RoHS)	03.01.2013
2006/66/EC	Battery directive	26.09.2008
EU Regulations	Scope	Date effective
1907/2006	Registration, evaluation, authorisation and restriction of chemicals (REACH)	01.06.2007
2019/1782	External power supply efficiency	01.04.2020
1103/2010	Capacity labelling of portable batteries	30.11.2010
EU Standards	Scope	
EN 9001:2015	Quality Management	
EN 61010-1:2020	Safety general laboratory equipment	
EN 61326-1:2013	Electromagnetic compatibility laboratory equipment	
EN 60950-1:2013	Safety information technology equipment	
EN 62368-1:2021	Safety information technology equipment	
EN 61951-2:2017	Batteries containing non-acid electrolytes	

PIPETBOY pro – Declaration of conformity

GBR Regulations	Scope	Date effective
S.I. 2016/1101	Electrical equipment safety	08.12.2016
S.I. 2016/1091	Electromagnetic compatibility (EMC)	08.12.2016
S.I.: 2008/2164	Batteries and accumulators regulations	26.09.2008
S.I. 2013/3113	Waste electrical and electronic equipment (WEEE)	01.01.2019
S.I. 2012/3032	Restriction of hazardous substances (RoHS)	02.01.2013

GBR Standards	Scope
BS 61010-1:2010	Safety general laboratory equipment
BS 62368-1:2020	Safety information technology equipment
BS 63000:2018	Restriction of hazardous substances (RoHS)

USA Regulations	Scope
47 CFR Part 15 (FCC)	Electromagnetic compatibility (EMC)
10 CFR Part 430	External power supply efficiency (CEC VI)
17 CFR Parts 240 & 249b	Dodd frank “Conflict minerals”
27 CCR Parts 25102-27001	Proposition 65: The safe drinking water and toxic enforcement act
TSCA 40 CFR Part 751	Toxic substances control act

USA Standards	Scope
UL 61010-1:2012	Safety general laboratory equipment

CAN Standards	Scope
CSA-C22.2 No. 61010-1	Safety general laboratory equipment

PIPETBOY pro – Declaration of conformity

CHN Regulations	Scope	Date effective
AQSIQ Order 5 /2001	China compulsory certification mark (CCC) safety and EMC requirements for electrical equipment	01.08.2003

Order 32/2016	Restriction of hazardous substances (RoHS)	01.07.2016
---------------	--	------------

CHN Standards	Scope
GB4943.1-2011	Information technology equipment safety
GB9254-2008	Information technology equipment radio disturbance
GB17625.1-2012	EMC limits for harmonic current emissions
SJ/T 11364-2014	Restriction of hazardous substances (RoHS)

EAC Технический регламент Таможенного союза

TP TC 004/2011	О безопасности низковольтного оборудования
TP TC 020/2011	Электромагнитная совместимость технических средств

KOR Regulations

KC 61010-1	Safety general laboratory equipment
KC 61010-2-081	Safety automatic laboratory equipment
KC 62368-1	Safety information technology equipment

AUS/NZL Regulations

AS/NZ 61010-1:2003	Safety general laboratory equipment
IEC 61010-2-081:2019	Safety automatic laboratory equipment
AS/NZ 62368-1:2022	Safety information technology equipment

Zizers, 2023-10-05


Urs Hartmann
CEO



Daniela Gross
Head of Corporate Quality

Table of Contents

1	Introduction	7
2	Description of the device	8
3	Installation	9
4	Operation	11
5	Maintenance.....	13
6	Technical Data	14
7	Accessories	16

Imprint

© 2025 INTEGRA Biosciences AG

All rights to this documentation are reserved. In particular the rights of reproduction, processing, translation and the form of presentation lie with INTEGRA Biosciences AG. Neither the complete documentation nor parts thereof may be reproduced in any way, or stored and processed using electronic media or distributed in any other way without the written consent of INTEGRA Biosciences AG.

Every effort has been made to provide complete and accurate information in this operating instruction manual. Although this manual should contain a specifically labeled warranty notice for the product, INTEGRA Biosciences AG makes no representations or warranties with respect to the contents of this manual and reserves the right to change this manual without notice if and when improvements are made.

INTEGRA Biosciences AG shall not be liable for any loss, damage, repair costs, incidental or consequential damages of any kind, whether based on express or implied warranty, contract, omission or strict liability, arising in connection with the design, development, installation or use of the products.

INTEGRA Biosciences AG aims to provide reliable and accurate data and documentation. If you find a discrepancy, we would be grateful for your assistance and ask you for email us at info@integra-biosciences.com.

Manufacturer and customer service

Your local INTEGRA Biosciences representative, further information, and operating instructions in other languages can be found at www.integra-biosciences.com or are available on request info@integra-biosciences.com.

Manufacturer

INTEGRA Biosciences AG

Tardisstrasse 201
CH-7205 Zizers, **Switzerland**
T +41 81 286 95 30
info-ch@integra-biosciences.com

INTEGRA Biosciences Corp.

22 Friars Drive
Hudson, NH 03051, **USA**
T +1 603 578 5800
info-us@integra-biosciences.com

Direct sales country

Integra Biosciences PTY Ltd

Unit 55, 193-203 South Pine Road
Brendale QLD 4500, **Australia**
T +617 3497 5800
info-au@integra-biosciences.com

INTEGRA Biosciences (Shanghai) Co., Ltd.

Room 1110, No. 515 Huanke Road
Shanghai 201315, **China**
T +86 21 5844 7203
info-cn@integra-biosciences.com

INTEGRA Biosciences Nordic ApS

Vallensbækvej 22A 3TV
Brøndby 2605, **Denmark**
T +45 3173 5373
info-nordic@integra-biosciences.com

INTEGRA Biosciences SAS

8 avenue du Fief
95310 Saint Ouen l'Aumône, **France**
T +33 1 34 30 76 76
info-fr@integra-biosciences.com

INTEGRA Biosciences Deutschland GmbH

An der Amtmannsmühle 1
35444 Biebertal, **Germany**
T +49 6409 81 999 15
info-de@integra-biosciences.com

INTEGRA Biosciences KK

Higashikanda 1-5-6, Chiyoda-ku
Tokyo, 101-0031, **Japan**
T +813 5962 4936
info-jp@integra-biosciences.com

INTEGRA Biosciences Benelux BV

Smederijstraat 2
4814 DB Breda, **Netherlands**
T +31 630 609 866
info-benelux@integra-biosciences.com

INTEGRA Biosciences Ltd

2 Rivermead Business Park
Thatcham, Berks, RG19 4EP, **United Kingdom**
T +44 1635 797 00
info-uk@integra-biosciences.com

1 Introduction

1.1 Intended use

PIPETBOY pro is a pipet controller designed for aspirating and dispensing aqueous solutions with plastic or glass pipets of 1 to 100 ml volumes. It is intended for measurement, control and laboratory use. Any use of this instrument in a medical or IVD setting is the sole responsibility of the user.

1.2 Safety notes

- 1) Do not use or charge PIPETBOY pro in an atmosphere with danger of explosion. Also, do not pipette highly flammable liquids such as acetone or ether.
- 2) When handling dangerous substances, comply with the material safety data sheet (MSDS) and with all safety guidelines such as the use of protective clothing and safety goggles. Never point a pipet in anyone's direction.
- 3) Avoid pipetting of liquids whose vapours could attack the materials PA (polyamide), POM (polyoxymethylene), FPM (fluor-rubber), NBR (nitrile-rubber), CR (chloroprene), silicone. Corrosive vapours could also damage metallic parts inside the device.
- 4) Use an original INTEGRA Biosciences mains adapter only and protect it from moisture, otherwise PIPETBOY pro might be damaged.
- 5) Prolonged exposure of PIPETBOY pro to UV-light can cause discolouration and/or yellowing of the plastic housing. However, this will not affect the performance of the device in any way.
- 6) Old NiMH batteries may cause a safety risk. We recommend to replace the batteries after 5 years of use. Also replace the batteries if the charging intervals are unusually short or if the charging takes much longer than usual (11 hours or more). These are indicators that the batteries have reached the end of its life-cycle.
- 7) NiMH technology bears the risk of cell rupture if the battery was damaged. Do not expose the battery to heat ($> 60^{\circ}\text{C}$) and avoid mechanical stress.
- 8) To extend the battery life-cycle, it is recommended to charge the batteries once a month if the PIPETBOY pro is not used regularly. If the PIPETBOY pro is not used for more than 3 months, remove the batteries from the instrument.

Regardless of the listed safety notes, additionally applicable regulations and guidelines of trade associations, health authorities, trade supervisory offices, etc. must be observed.

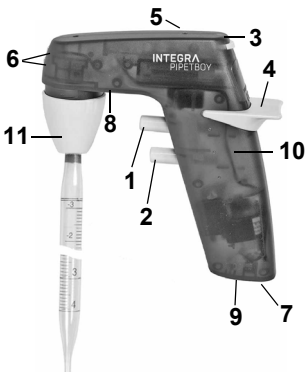
Please visit our website www.integra-biosciences.com on a regular basis for up to date information regarding REACH classified chemicals contained in our products.

2 Description of the device

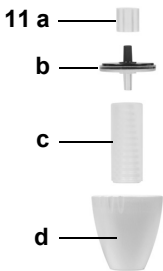
2.1 Scope of delivery

- PIPETBOY pro device
- 2 rechargeable batteries (AAA, NiMH, 1.2 V)
- Mains adapter
- Wall mount
- Hydrophobic sterile filter 0.45 µm (spare)
- Operating instructions

2.2 Overview of PIPETBOY pro



- 1 Aspiration button
- 2 Dispensing button
- 3 Thumb wheel for speed control
- 4 Flexor (hand rest and stand)
- 5 Battery charge indicator (red, green)
- 6 Contacts for charging station
- 7 Socket for mains adapter cable
- 8 LED illumination
- 9 On/off switch for LED illumination function
- 10 Handle



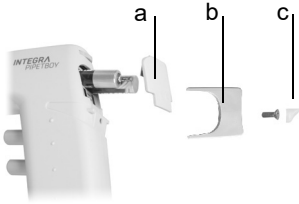
- 11 Sterile module (=nose piece)
 - 11a Filter rubber
 - 11b Hydrophobic filter
 - 11c Pipet mount
 - 11d Sterile module housing



The serial number of the PIPETBOY pro can be found in the battery compartment.

3 Installation

3.1 Inserting or replacing the batteries



- 1) Remove the silicone plug (c), unscrew the flexor (b) and remove it with the cover (a).
- 2) Insert two original INTEGRA rechargeable batteries (1.2 V) with the correct polarity (+/-).
- 3) Put the cover and flexor back in place and tighten the screw not excessively. Cover the screw with the silicone plug (c).

3.2 Charging the batteries

A full charge takes 10 hours, but before the first use, PIPETBOY pro should be charged at least 16 hours.

When the battery charge indicator (5) lights up red, PIPETBOY pro needs charging immediately. PIPETBOY pro has an integrated overcharge protection.

The battery charge indicator (5) lights up green when the mains adapter is connected. PIPETBOY pro can be used while it is being charged.

3.3 Mounting of the wall mount

The supplied wall mount serves to park PIPETBOY pro.

To mount the wall mount, remove the protective foil from the adhesive tape at the back of the mount and press it to the desired place. Make sure that the surface onto which the wall mount is mounted is smooth, clean and grease-free. Wait 24 hours before using the wall mount for the first time. Alternatively the wall mount can be fixed with the included screws.

3.4 Set-up and use of the charging station (optional accessory)

The optionally available charging station (Part No 156 450) serves to simultaneously park and charge PIPETBOY pro.



To mount the charging station on a wall, use one of the following means:

- double-sided adhesive tape
- screw fixation

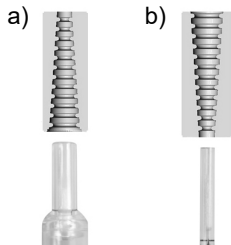
Alternatively, the charging station can be placed on the bench when fitted with rubber feet that prevent its sliding.

Plug the cable of the mains adapter in the socket on the side of the charging station and connect the mains adapter to the power supply.

Parking PIPETBOY pro in the charging station starts charging.

4 Operation

4.1 Inserting the pipet



The pipet mount (11c) has a special conical channel to guarantee a firm and leak-proof grip of the pipet independently of its diameter.

Unscrew the nose piece housing (11d) and orient the pipet mount:

- a) with the large opening facing down for pipets > 2 ml (factory setting), or
- b) with the small opening facing down for pipets < 2 ml.



WARNING

Do not insert pipets with force into PIPETBOY pro, because they can break and cause injury, particularly thin pipets made of glass.

4.2 Pipetting

Press the aspiration button (1) to fill the pipet and the dispensing button (2) to empty it.

The aspiration and dispensing speed can be controlled in two manners:

- Fine speed adjustment by varying the finger pressure on the buttons (1, 2).
- Step-less presetting of the maximum pump speed by turning the thumb wheel (3) to optimally match the pipet volume (turning to the left = slower pump speed, for small pipets; to the right = faster, for large pipets).

To empty the pipet by gravity force, press the dispensing button only slightly in order to avoid reaching the trigger point where the pump starts running. Gravity dispensing is used for “to deliver” (TD) pipets that are not of the “blow-out” type (blow-out pipets have two thin rings or a frosted band around the neck).

4.3 LED illumination

The LED (8) near the nose piece illuminates the work area around the pipet when the pipetting buttons (1, 2) are pressed. After release of the button, the LED remains alight for a approx. five seconds. The on/off-switch (9) at the base of the handle (10) serves to switch the LED function on (I) or off (O).

4.4 Troubleshooting

Problem	Probable cause	Remedy
Pipet drips (leak in the system).	Pipet is damaged or not fully inserted in the nose piece (11). The inside of the pipet mount (11c) is damaged resulting in insufficient sealing of the pipet neck.	Reinsert a new pipet by pushing it all the way into the nose piece. Make sure that the pipet mount orientation is correct for the used pipet (see "4.1 Inserting the pipet" on page 11). Replace the pipet mount (Part No. 151020).
Reduced aspiration efficiency or no liquid aspiration.	The filter rubber (11a) or the filter (11b) in the nose piece are damaged or missing causing a leak. The filter (11b) is wet or dirty. The nose piece (11) is not tight. The batteries are discharged (battery charge indicator lights red). The batteries are missing.	Replace the filter rubber (Part No. 153225) and/or the filter (Part No. see "7 Accessories" on page 16). Replace filter. Tighten the nose piece, or replace defective parts. Charge the batteries. Insert the batteries, or connect the instrument to the mains adapter.
Reduced operating time with fully charged batteries.	The batteries are defective. The batteries are wrongly inserted. The batteries are worn. Wrong battery type is inserted.	Replace the batteries. Insert correctly, note polarity (+) and (-). Replace the batteries. Use only original consumables.

5 Maintenance

After maintenance work, perform a leak test to ascertain correct functioning of PIPETBOY pro: liquid should not leak out of a filled pipet before the dispensing button is pressed.

5.1 Cleaning and servicing

PIPETBOY pro can be cleaned with a cloth moistened with soapy water or with a 70 % ethanol.

It is recommended to change the hydrophobic filter (11b) every three months. Should the filter get wetted or soiled, it has to be changed immediately. If one side of the filter is colored, it must face upwards towards PIPETBOY pro. Clear (transparent) filters can be inserted in any direction.

5.2 Decontamination

The nose piece (11), the pipet mount (11c) and the filter rubber (11a) can be autoclaved at 121 °C, 1 bar overpressure for 20 minutes. Silicone may become brittle after extensive autoclaving. Replace the pipet mount and filter rubber if they are damaged.

If the housing of the PIPETBOY pro have been in contact with biohazardous material, it must be decontaminated in accordance to good laboratory practice. Do not spray directly on the instrument but use a lint-free cloth, lightly soaked with a disinfectant and wipe dry directly after decontamination. Never use acetone or other solvents! Follow the instructions provided by the disinfectant manufacturer.

The device may be decontaminated with H₂O₂ gas (maximal concentration 35 %) for 60 minutes.

5.3 Equipment disposal



The PIPETBOY pro device must not be disposed of with unsorted municipal waste. Do not dispose of the device in a fire.



PIPETBOY pro contains NiMH batteries. Do not modify the batteries in any way. Discharge the batteries before disposal. Dispose of the PIPETBOY pro and the batteries separately in accordance with the laws and regulations in your area governing disposal of devices containing NiMH batteries.

In certain regions and countries, e.g. in EU member states, the distributor is obliged to take back this product free of charge at the end of life. Please contact your local distributor for more details.

6 Technical Data

6.1 Specifications

Pipetting speed	max. 12 ml/s
Batteries	Type: rechargeable, AAA, NiMH, 1.2 V Charging cycles: 500-1000 (when charging as indicated) Running time: at least 4000 cycles of aspiration and dispensing of 25 ml.
Electricity supply	Mains adapter input: 100–240 VAC, 50/60 Hz Device input: 8–10 VDC, 4.5 W
Materials	Housing: ABS (white), MABS (all other colors) Nose piece: POM Pipet mount: Silicone Filter rubber: Silicone
Dimensions (H x W x D)	145 x 130 x 35 mm
Weight	190 g
Ambient conditions	Operation: 5–40°C, max. 80% RH Storage: -10–50°C, max. 95% RH

6.2 Intellectual property

For patent and trademark information visit:

<https://www.integra-biosciences.com/patents-trademarks>.

6.3 Chemical compatibility

The table below lists PIPETBOY pro parts that come into contact with the aspirated liquid or its aerosols and vapors, and rates the compatibility of these parts to a few of the chemicals commonly used in laboratories. To determine the compatibility of a component to a chemical not listed in the table, please consult one of the several tables available on the internet. Note that the rating refers to soaking in the concentrated chemical; however, more relevant here is the attenuated effect resulting from vapors and the diluted chemical. It is recommended to test the compatibility of relevant components to a specific chemical prior to extensive use.

INTEGRA Biosciences does not warrant that the information in the table is accurate or complete and that any material is suitable for any purpose.

Chemical compatibility chart

Parts	Materials	JAVEL (e.g. NaClO)	Acetic acid (25 %)	Ethanol	Isopropyl alcohol	NaCl saturated	Sodium hydroxide (50%)	Sodium acetate (3M, pH 5.2)	Hydrochloric acid (20%)	Chloroform	Acetone
Handle (white)	ABS	A	C	A	B	A	A	A	A	C	C
Handle (other colors)	MABS	A	A	A	B	A	A	A	A	C	C
Nose piece housing	POM	C	C	A	A	A	A	A	B	A	A
Pipet mount, Filter rubber, tubings	Silicone	A	B	A	A	A	A	C	A	C	C
Internal parts (e. g. pump)	FPM	A	A	A	A	A	C	C	A	A	C
	NBR	A	B	B	A	A	A	A	A	C	C
	CR	A	A	A	A	A	A	A	A	B	A
	Metal	C	C	A	A	B	C	A	C	A	A

Compatibility ratings:

A = Good: no or minor effects.

B = Fair: moderate effects, not recommended for continuous use.

C = Critical: not recommended, suitability to be determined by test.

7 Accessories

Accessories		Part No.
Charging station	for parking and charging PIPETBOY pro	156 450
Stand for PIPETBOY and VACUBOY	for parking PIPETBOY pro with inserted pipet and for a well organized work area	155065
Sterile module (nose piece)	grey, complete nosepiece for PIPETBOY pro, for holding filter rubber, filter and pipet mount	156 104
Wall mount	for parking PIPETBOY pro on the wall	156708
Mains adapter (100-240 VAC, 50/60 Hz)	US version	156630
	EU version	156631
	UK version	156632
	AU version	156633
	JP version	156634

Consumables		Part No.
Filter 0.45 µm	sterile/unsterile, for the country specific part numbers, please refer to our website	_____
Filter 0.2 µm	sterile/unsterile, for the country specific part numbers, please refer to our website	_____
Pipet mount	silicone, for holding pipet in the nose piece	151020
Rubber for filter	silicone, for holding the filter in the nose piece	153225
Battery set	NiMH, PIPETBOY pro, pack of 2	156 151

Battery cover set PIPETBOY pro		Color	Part No.
Set contains:	colored cover, flexor, screw, plug	white	156430
		pink	156431
		green	156432
		orange	156433
		blue	156434