



## ASSIST PLUS and ASSIST

Pipetting Robots

Automating Handheld Pipettes



**1 to 384**

well microplates,  
tubes, reservoirs

Tube-to-plate transfers  
Plate reformatting  
Serial dilutions  
Plate filling

Normalization  
Hit picking  
Master mix  
Magnetic bead purifications

## FREEDOM FROM ROUTINE PIPETTING



## ASSIST PLUS and ASSIST

### Pipetting robots

Any lab routinely performing pipetting can benefit from the **ASSIST** or **ASSIST PLUS**. These pipetting robots offer reliable walk-away processing for common pipetting tasks at an affordable price, and can be used by everyone in the lab.

Using INTEGRA electronic multichannel pipettes or the **D-ONE** single channel pipetting module, these systems automate repetitive tasks while eliminating physical strain, providing superior reproducibility and ensuring error-free processing.

**ASSIST PLUS – small, affordable and fast automatic pipetting from tubes to plates.**

**“The level of automation provided by the ASSIST PLUS has been hugely beneficial to our entire group, and it can be used in many applications within our workflow.”**



**Yvette Hoade**  
The Cancer Institute,  
University College  
London

## Walk-away processing

Automated, walk-away pipetting for routine tasks frees up valuable time for lab personnel. This not only increases overall productivity, but also ensures consistent and reliable processing, helping to ensure superior reproducibility and high quality results.

## Consistent and reproducible pipetting results

Automated handheld pipetting on the ASSIST pipetting robots offer:

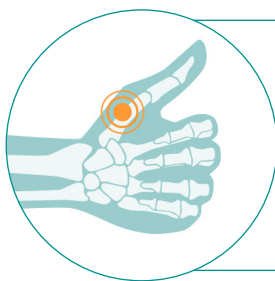
- Precise tip positioning in wells
- Optimal tip immersion depths
- Consistent pipetting angle
- Controlled pipetting speeds
- No pipetting mistakes
- Strict adherence to pipetting programs



So much to do, so little time? Let the **ASSIST** and **ASSIST PLUS** pipetting robots do your pipetting work.

## Two instruments support unlimited applications

The unique design of the **ASSIST** and **ASSIST PLUS** means that they can grow with your lab's needs – simply swap in any of INTEGRA's 25 multichannel pipettes or a single channel pipetting module to access unlimited applications – and you can still use the same multichannel pipettes for manual activities.



**Not holding a pipette at all is the most ergonomic solution!**

ASSIST and ASSIST PLUS relieve you of the pipetting burden and help to prevent repetitive strain injuries (RSI).

## Another application? Simply switch the pipette!



**D-ONE single channel pipetting modules\*:**  
For normalization, hit picking, master mix preparation and complex plate layouts.



**VIAFLO lightweight electronic pipettes:**  
For plate-to-plate transfers and fast 384 well filling.



**VOYAGER adjustable tip spacing pipettes\*:**  
For tube-to-plate transfers and pipetting between different plate formats.

**25 multichannel pipettes**

**2 single channel pipetting modules**

**0.5 to 1250  $\mu$ l volume ranges**

**1, 4, 6, 8, 12 or 16 channels**

**Fixed or adjustable tip spacing**

\* Only compatible with ASSIST PLUS

## Your labware fits on the deck!

**ASSIST PLUS** can accommodate numerous common labware types – from tubes to 384 well plates in landscape or portrait orientations – while **ASSIST** is ideal for single plate applications. Both instruments work with INTEGRA multichannel reservoirs, which are available in 10, 25 and 100 ml sizes and offer exceptionally low dead volumes. For larger storage volumes, INTEGRA's automation friendly reservoirs can be used with the **ASSIST PLUS**.



### Did you know?

#### Streamline magnetic bead purifications

MAG and HEATMAG modules are user-friendly solutions for efficient magnetic bead purification. In combination with the **ASSIST PLUS**, magnetic bead purifications can be fully automated. The modules' strong magnets are moved vertically, enable fast bead collection with minimal bead loss for high yields and magnet height is fully adjustable depending on the volume. HEATMAG modules also feature a unique combination of magnetic separation and heating functions, providing optimal settings for nucleic acid extraction. The modules are compatible with tubes and plates, providing added versatility for a wide range of applications in molecular biology or proteomics.

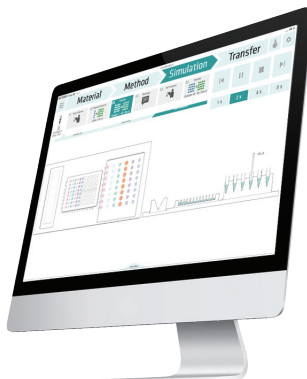


## Keep it simple

One of the greatest benefits of the **ASSIST PLUS** is how simple it is to program and start. No special training is required – simply create a program using VIALAB. We invested a lot of time into making this the easiest programming tool around. If a PC is not available, simply program directly on the instrument.



or



**“It takes only minutes to set up a new program, and then all you need to do is place the VOYAGER on the ASSIST PLUS and start the run. Being able to customize our programs so easily is a big advantage. It means that everyone can do it.”**



**Adrianna Olejniczak**  
Southmead Hospital, Bristol

VIALAB guides the user step by step through the set-up of individual protocols, prompting them to enter the necessary parameters. All programs can be simulated to estimate processing times and the number of tips required.

1

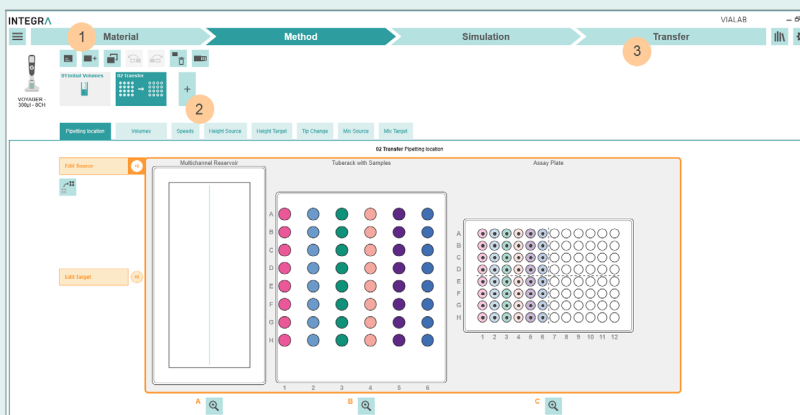
**Choose your materials:**  
pipette, tip and labware

2

**Define your method and pipetting**  
steps, e.g. repeat dispensing

3

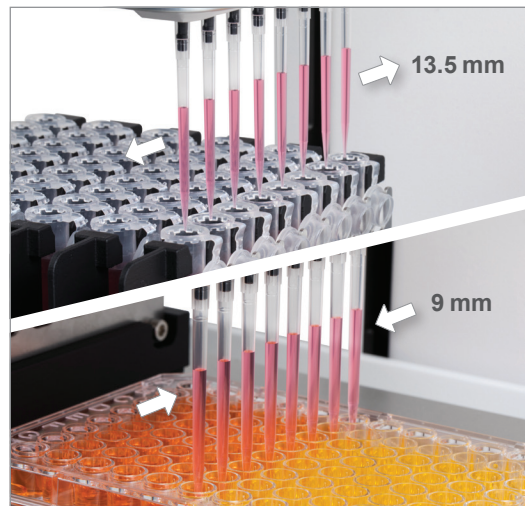
**Transfer the protocol**  
to the pipette



**VIALAB is a free software! Download and try VIALAB now!**

[www.integra-biosciences.com/download-vialab](http://www.integra-biosciences.com/download-vialab)

## Endless possibilities with VIAFLO and VOYAGER pipettes



### Faster from tubes to plates!

Reformatting samples from one labware type to another – e.g. from tubes into plates – is a tedious and error-prone task. Equipping the **ASSIST PLUS** with a VOYAGER adjustable tip spacing pipette enables on-the-fly adjustment of tip spacing, allowing up to 12 times faster processing of tubes and plates than with a single channel pipette.



24 - 48 - 96 - 384 well plate transfers



Serial dilution

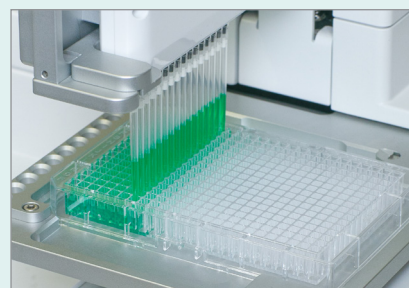


Plate filling



Sample pooling

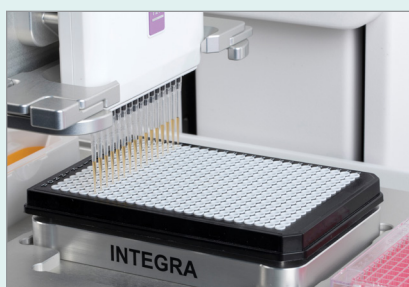
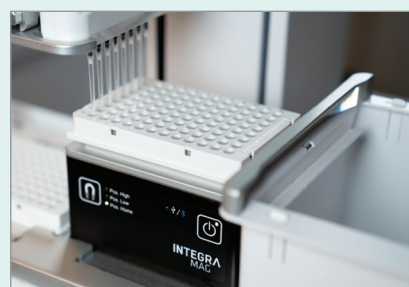


Plate copying



Magnetic bead purification

## Applications unlocked with D-ONE pipetting module



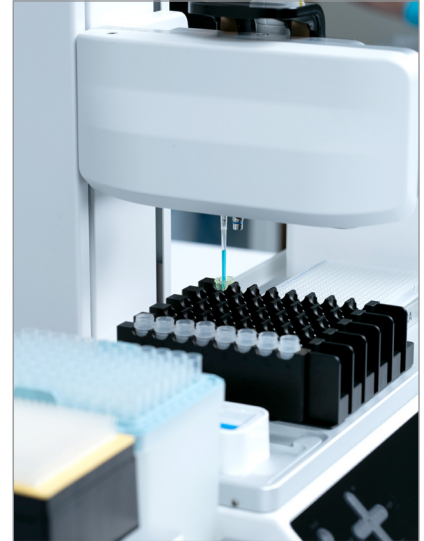
### Normalization

Equalization of different sample concentrations to one.



### Hit picking/cherry picking

Transfer individual samples to a target plate effortlessly.



### Master mix preparation

Mixing of various reagents for PCR or other assays.

## D-ONE

### Single channel pipetting module for ASSIST PLUS

The **D-ONE** single channel pipetting module offers hands-free transfers from individual tubes or wells on the **ASSIST PLUS** pipetting robot. This makes it the perfect add-on for labs that want to go beyond the possibilities of multichannel pipetting to access unlimited applications. It is designed to offer easy automation of normalization, hit picking and master mix preparation, freeing up your time while eliminating transcription errors.



From the headache of manual pipetting to hands-off and worry-free processing with the **ASSIST PLUS** and the **D-ONE** single channel pipetting module.

## Worry-free processing and easy set-up

- Different liquid levels in each sample are no problem at all! The **D-ONE** offers automatic liquid level detection, overcoming the need to specify fill volumes for easier and faster program set-up.
- No more dilution calculation errors! Normalization calculations for sample dilution are automatically performed by VIALAB based on input concentrations.
- Import of worklist files for easy sample and volume selection during normalization and hit picking.
- For total peace of mind, pipetting reports are automatically generated, detailing which wells were processed.

### 💡 Did you know?

#### Best pipetting results are achieved through:

- optimal pipetting height, thanks to liquid level detection.
- automatic selection of the correct tip type, to ensure the highest precision throughout the dynamic volume range.



## Increased walk-away time

Each **D-ONE** single channel pipetting module is compatible with two different GripTip sizes, providing a broad volume range without needing to change the pipetting tool during a protocol. This makes it ideal for workflows including high and low volume pipetting steps, such as plate normalizations with highly variable concentrations.

#### **D-ONE** single channel pipetting modules are available in two volume ranges:

- from 0.5 to 300  $\mu\text{l}$  (compatible with 12.5 and 300  $\mu\text{l}$  GRIPTIPS).
- from 5 to 1250  $\mu\text{l}$  (compatible with 125 and 1250  $\mu\text{l}$  GRIPTIPS).

0.5  $\mu\text{l}$

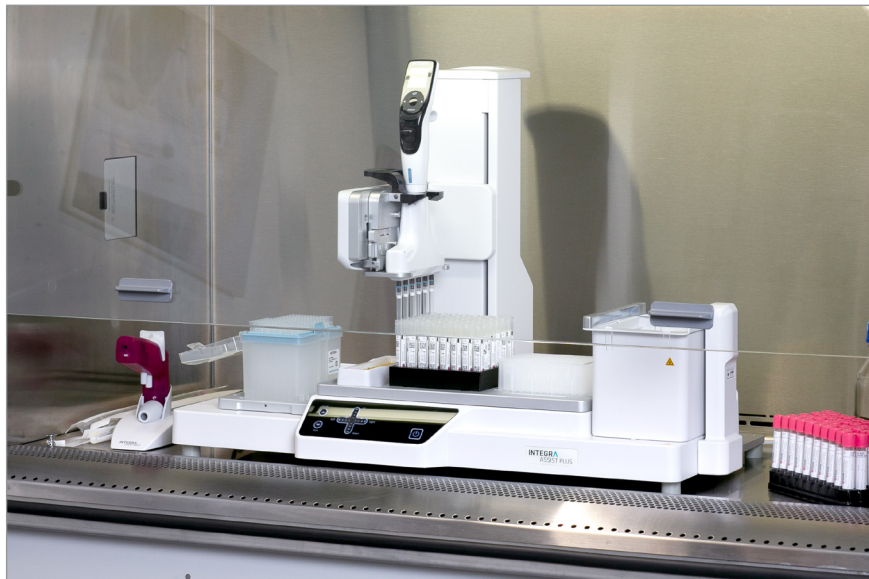
300  $\mu\text{l}$

5  $\mu\text{l}$

1250  $\mu\text{l}$



## Compact footprint fits in every lab



These compact pipetting robots can be placed into biosafety cabinets for sterile sample processing and user protection, overcoming the ergonomic hazards of working in such. The **ASSIST** offers a minimal footprint, leaving maximum space for additional manual work.

## GRIPTIPS

The **ASSIST** and **ASSIST PLUS** feature INTEGRA's advanced GRIPTIPS system. This securely locks the tips to the pipetting head to ensure perfect alignment and eliminate the risk of loose or leaking tips, even during sidewall touch offs. Available in a range of volumes – as well as sterile and filtered configurations – these high quality tips provide a perfect seal to maximize pipetting accuracy and reduce tip loading forces. The **ASSIST PLUS** even offers automated tip loading and ejection to minimize the risk of fatigue and RSI.



### Did you know?

**GRIPTIPS** are guaranteed never to leak, loosen or fall off during a protocol, and will always attach at the exact same height, ensuring error-free pipetting.

## Ordering information

Base units	Part no.
ASSIST pipetting robot base unit	4500
ASSIST PLUS pipetting robot base unit, including tip waste bin and pipetting charging cable	4505

Select one or more pipettes/pipetting modules		D-ONE	VIAFLO	VOYAGER
Compatible with:		ASSIST PLUS	ASSIST & ASSIST PLUS	ASSIST PLUS
1 channel	0.5 – 300 µl	4531	-	-
	5 – 1250 µl	4532	-	-
4 channels	10 – 300 µl	-	-	4743
	50 – 1250 µl	-	-	4744
6 channels	10 – 300 µl	-	-	4763
	50 – 1250 µl	-	-	4764
8 channels	0.5 – 12.5 µl	-	4621	4721
	2 – 50 µl	-	4626	4726
	5 – 125 µl	-	4622	4722
	10 – 300 µl	-	4623	4723
	50 – 1250 µl	-	4624	4724
12 channels	0.5 – 12.5 µl	-	4631	4731
	2 – 50 µl	-	4636	4736
	5 – 125 µl	-	4632	4732
	10 – 300 µl	-	4633	-
	50 – 1250 µl	-	4634	-
16 channels	0.5 – 12.5 µl	-	4641	-
	2 – 50 µl	-	4646	-
	5 – 125 µl	-	4642	-

Accessories	Part no.
D-ONE All-in-one bundle	4539
Pipette communication module	4221
Charging/communication stand (single pipette)	4211
Bags for tip waste bin (200 bags)	4570
MAG module for magnetic separation	4900
HEATMAG module for heating and magnetic separation	4901
Adapter for 1.5 ml tubes (MAG/HEATMAG)	4905
Adapter for 96 well PCR plates (MAG/HEATMAG)	4906
Adapter for 384 well PCR plates (MAG/HEATMAG)	4908
Communication module for MAG modules	4222
4 Position Portrait Deck	4521

Accessories	Part no.
Rack for 0.5 ml microcentrifuge tubes	4541
Rack for 1.5/2 ml microcentrifuge tubes	4540
Rack for 15 ml centrifuge tubes, 4x6 tubes	4542
Rack for 2 ml HPLC vials, 6x8 vials	4545
Rack for swab tubes, 6x8 tubes	4546
Dual Reservoir Adapter	4547
Rack for 4 ml blood tubes, 6x8 tubes	4552
Slanted Plate Holder (0°-30°)	4510
PCR 96 well cooling block	6250
PCR 384 well cooling block	6255
Flat bottom cooling block	6260

**GRIPTIPS** – for part no. please refer to our website ([www.integra-biosciences.com/GRIPTIPS](http://www.integra-biosciences.com/GRIPTIPS)).

	ECO Rack GRIPTIPS for Handheld Pipettes	GRIPTIPS for Benchtop Pipetting Systems	
ASSIST	x	x	
ASSIST PLUS		x	

**Reservoirs** – for polypropylene reservoirs and more options please refer to our website.

Reagent Reservoirs with SureFlo™ anti-sealing array, polystyrene				
	Volume	Trial pack	Individually sealed	Bulk, sterile
Multichannel Reservoirs	10 ml	4370	4371 (30 pc)	4372 (200 pc)
	25 ml	4380	4381 (30 pc)	4382 (200 pc)
	100 ml	4390	4391 (30 pc)	4392 (200 pc)
Divided Reservoirs	5 ml and 10 ml compartments	4350	4351 (30 pc)	4352 (200 pc)
12 Well Reservoirs	3 ml per well	4360	4361 (30 pc)	-
Automation Friendly Reservoirs	150 ml	6303	6317 (30 pc)	6318 (100 pc)
	300 ml	6307	6327 (30 pc)	6328 (100 pc)
	8 rows 12 columns		6363 (30 pc) 6373 (30 pc)	

## Overview of ASSIST pipetting robots



Model	ASSIST	ASSIST PLUS
Part no.	4500	4505
Tip loading/ejection	Manual	Automatic
Pipetting protocol set-up	Pipette VIALINK	Pipette VIALINK VIALAB
Available pipettes	VIAFLO	D-ONE pipetting module VIAFLO VOYAGER (adjustable tip spacing)
Deck positions	1 position for plates Plus 1 PCR tube strip and 1 multichannel reservoir	1 position for tip loading Up to 4 positions for plates, tube racks or reservoirs 1 position for tip waste
Applications	Serial dilution Plate filling Reagent addition	Serial dilution Plate filling Reagent addition Plate reformatting Plate duplications Tube-to-plate transfers Normalization Hit picking Master mix preparation Magnetic bead purification
Dimensions (WxDxH)	34 cm x 36 cm x 40 cm (13" x 14" x 16")	75 cm x 38 cm x 51 cm (30" x 15" x 20")
Weight	10 kg (22 lbs)	25 kg (55 lbs)



Contact us:

