



Clear Advantage™ Reagent Reservoirs

Save Space And Minimize Dead Volume



SureFlo™ anti-sealing array
optimizes highest sample recovery

**10, 25, 100, 150
and 300 ml**
volumes for any application

**Polystyrene
and polypropylene**
options available

Minimize reagent dead volume



Clear graduations on the reusable base offer more accurate measurements and less reagent waste.

8 row automation friendly reservoir



12 column automation friendly reservoir



SureFlo™ anti-sealing array

Unique SureFlo anti-sealing array and hydrophilic surface treatment spread reagents evenly across the base of the reservoir, allowing tips to sit on the bottom without aspirating air and reducing dead volumes. The SureFlo anti-sealing feature can be found on the 10, 25, 100 ml, divided, 12 well and automation friendly reservoirs. The 8 row and 12 column automation friendly reservoirs also feature the SureFlo anti-sealing array.

CLEAR ADVANTAGE™ REAGENT RESERVOIRS

with SureFlo anti-sealing array

INTEGRA offers 10, 25 and 100 ml multichannel reservoirs, 25 ml divided reservoirs, 12 well reservoirs, and 8 row, 12 column and 150/300 ml automation friendly reservoirs, all in both polystyrene and polypropylene for improved chemical compatibility. All **Clear Advantage reservoirs** share many of the same unique features and can be nested for added convenience. This makes it possible to fit twice as many reservoirs in half the space to reduce storage space requirements and minimize shipping costs. Unlike traditional reservoirs that have hard to see graduations molded directly into the plastic, **Clear Advantage reservoirs** are visibly marked and fit into a reusable base. This innovative design leads to accurate reagent measurements, no over pouring, and less wasted reagent.



Polystyrene



Polypropylene

💡 Did you know?

Our sturdy and reusable polypropylene reagent reservoirs offer high resistance to solvents and low binding of proteins and dyes, making them the go-to choice for most protocols. Please refer to our website for technical notes about the reservoirs' solvent resistance and use in PCR testing.





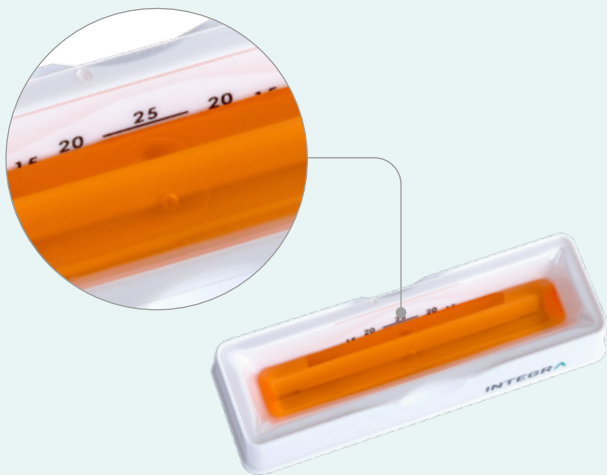
Reusable reservoir base

A sturdy, reusable base is included with every case of bulk or individually sealed reservoirs. The multichannel reservoir base is designed for standalone use, or with the **ASSIST** and **ASSIST PLUS** pipetting robots. The automation friendly reservoir base can be used with the **VIAFLO 96**, **VIAFLO 384** and **MINI 96** electronic multichannel pipettes, or any platform that uses labware with a standardized footprint.



Disposable inserts

Each reusable reservoir base securely holds disposable clear reservoir inserts during use. Reservoir inserts neatly nest inside one another, significantly reducing storage requirements. Plastic waste is also reduced by only replacing the insert and not the entire reservoir.



Printed graduations

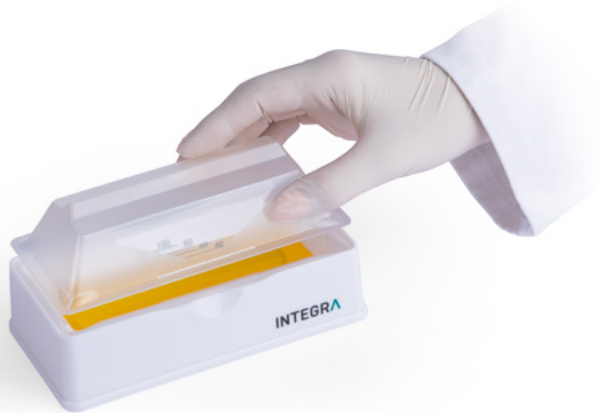
Integrated volume graduations result in more accurate measurements and less reagent waste. The unique design refracts light so that graduations below the fluid surface become invisible, making it easy to quickly and precisely fill to the desired reagent volume.



Pour back spouts

A convenient pour back spout is molded into each reagent reservoir, allowing precise control of liquid flow for neat and easy return of excess fluid to a source container if your protocol permits.

Multichannel reagent reservoirs



Inserts are lids

The 10, 25 and 100 ml multichannel reservoir bases can accommodate a second reservoir insert as a lid, preventing evaporation or contamination.

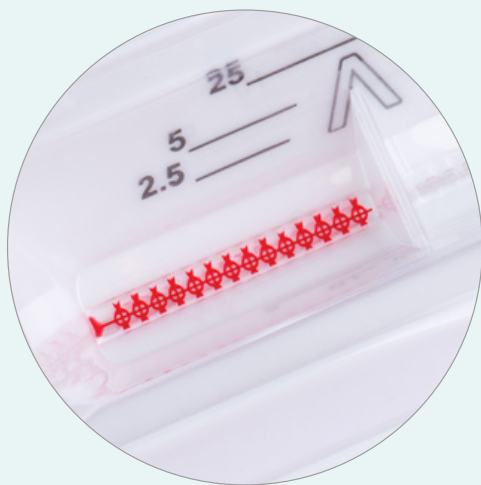


Deep trough design

Multichannel reagent reservoirs feature an extra deep trough that accumulates liquid, reducing dead volumes and ensuring maximum reagent recovery.

Divided reagent reservoirs

Our 25 ml divided reservoirs offer the lowest dead volumes for multichannel pipetting, with 5 and 10 ml compartments to allow you to work with smaller reagent volumes.



SureFlo™ anti-sealing array

12 well reagent reservoirs



These multichannel reservoirs are made up of 12 compartments, each with a 3 ml capacity, and are designed to nest comfortably into our standard 25 ml reusable, sturdy base. This reservoir is ideal for a variety of liquid handling applications since the 9 mm reservoir well spacing matches plate spacing making it especially handy for 8 and 12 channel pipetting of samples onto an entire row or column of a 96 well plate.

Automation friendly reagent reservoirs



Latching lid with gasket

Both the 150 and 300 ml automation friendly reagent reservoir bases have latching lids. The lids incorporate a gasket which prevents spillage during transport, and evaporation during short term storage. Simply insert the reservoir into the base, secure the lid and slide the latches forward to lock the system. When lids are not being used, the latches can be left in the 'unlocked' position to allow easy insertion and removal of reservoirs.



Dual viewing windows

A clear line of sight to the bottom of the reagent reservoir is crucial to prevent crashing pipette tips. Dual viewing windows allow users to safely position tips whether 96, 384 or a single column of tips are being used.




Treated flat bottom

A specially formulated hydrophilic surface treatment prevents liquid from pooling, allowing a flat-bottom reservoir design that ensures even distribution of liquids across the entire reservoir. In combination with the 96/384 anti-sealing pattern, this eliminates the need for traditional V-shaped wells, ensuring the lowest possible dead volume on the market!


8 row and 12 column options

The 8 row and 12 column polypropylene and polystyrene reservoirs are also available for use with the INTEGRA standard footprint automation friendly base. 12 column reservoirs feature a capacity of 21 ml per well, while the 8 row reservoirs offer a capacity of 32 ml per row. Both materials and configurations employ SureFlo technology to achieve the lowest possible dead volumes.

Multichannel reagent reservoir ordering information

Volume	Description	Polystyrene Part no.	Polypropylene Part no.	SureFlo™ Polystyrene Part no.	SureFlo™ Polypropylene Part no.
10 ml For use with 8 and 16 channel pipettes	 Trial Pack, Sterile	4330	4335	4370	4375
	30 Individually Sealed, Sterile	4331	4336	4371	4376
	200 Bulk, Sterile	4332	4337	4372	
	10 Reservoir Bases	4306	4306	4306	4306
25 ml For use with 8, 12 and 16 channel pipettes	 Trial Pack, Sterile	4310	4315	4380	4385
	30 Individually Sealed, Sterile	4311	4316	4381	4386
	200 Bulk, Sterile	4312	4317	4382	
	10 Reservoir Bases	4304	4304	4304	4304
100 ml For use with 8, 12 and 16 channel pipettes	 Trial Pack, Sterile	4320	4325	4390	
	30 Individually Sealed, Sterile	4321	4326	4391	
	200 Bulk, Sterile	4322	4327	4392	
	10 Reservoir Bases	4305	4305	4305	

12 well reagent reservoir ordering information

Volume	Description	Polystyrene Part no.	Polypropylene Part no.
9 mm spacing For use with 1, 8 & 12 channel pipettes	 Trial Pack, Sterile	4360	4365
	30 Individually Sealed, Sterile	4361	4366

25 ml divided reagent reservoir ordering information

Volume	Description	Polystyrene Part no.	Polypropylene Part no.
25 ml	Trial Pack, Sterile	4350	4355
	30 Individually Sealed, Sterile	4351	4356
	200 Bulk, Sterile	4352	4357



Automation friendly reagent reservoir ordering information

Volume	Description	Polystyrene Part no.	Polypropylene Part no.
150 ml	8 Reservoir Bases, Non-Sterile	6301	6301
	25 Lids, Sterile	6302	6302
	Trial Pack, Sterile	6303	6308
	30 Individually Sealed, Sterile	6317	6337
	100 Bulk, Sterile	6318	6338
300 ml	8 Reservoir Bases, Non-Sterile	6305	6305
	25 Lids, Sterile	6306	6306
	Trial Pack, Sterile	6307	6309
	30 Individually Sealed, Sterile	6327	6347
	100 Bulk, Sterile	6328	6348



8 row and 12 column automation friendly reagent reservoir ordering information

Volume	Description	Polystyrene Part no.	Polypropylene Part no.
8 row	30 Individually Sealed, Sterile	6373	6374
12 column	30 Individually Sealed, Sterile	6363	6364



Polypropylene reagent reservoir ordering information

INTEGRA also offers standard footprint polypropylene reagent reservoirs that provide improved chemical compatibility and allow autoclaving. Three formats are available – including 300 ml openwell (with 96 pyramid-shaped indentations), 12 column and 8 row options – with dead volumes of 9.7 ml per reservoir, 219 µl per column and 354 µl per row respectively.



Format	Description	Part no.
96 well	25 Reservoirs Per Case, Pyramid Bottom, Non-Sterile	6351
	25 Reservoirs Per Case, Pyramid Bottom, Pre-Sterilized	6352
Deep Well Plate	50 Reservoirs Per Case, Deep Well Plate, V Bottom, Sterile, 2.2ml Per Well	6353
12 column	25 Reservoirs Per Case, Pyramid Bottom, Non-Sterile	6361
	25 Reservoirs Per Case, Pyramid Bottom, Pre-Sterilized	6362
8 row	25 Reservoirs Per Case, Pyramid Bottom, Non-Sterile	6371
	25 Reservoirs Per Case, Pyramid Bottom, Pre-Sterilized	6372

INTEGRA polystyrene SureFlo reagent reservoir dead volumes

Description	Volume	Description	Volume
10 ml Multichannel	< 20 µl	150 ml Automation Friendly	< 3 ml
25 ml Multichannel	< 50 µl	300 ml Automation Friendly	< 3 ml
100 ml Multichannel	< 50 µl	8 Row Automation Friendly	< 50 µl
12 well Multichannel	< 5 µl per well	12 Column Automation Friendly	< 25 µl
25 ml Divided Multichannel	5 ml side < 10 µl		
	10 ml side < 20 µl		
		96 Pyramid Bottom (Polypropylene)	< 12 ml
		8 Row Block (Polypropylene)	< 500 µl per row
		12 Column Block (Polypropylene)	< 300 µl per column

INTEGRA Deep Well Plate dead volumes

Description	Volume
96 Well, Deep Well Plate	< 5 µl per well



Contact us:



www.integra-biosciences.com