

VIAFLO 96 | VIAFLO 384

24, 96 and 384 Channel Handheld Electronic Pipettes
Versatile and Productive



24, 96 and 384
channels available

Handheld or Hands-free
operating modes

24 to 1536
well microplates

VERSATILE AND PRODUCTIVE



Simple operating concept makes the VIAFLO 96 | VIAFLO 384 as easy to use as any traditional pipette

Interchangeable pipetting heads to guarantee accuracy for a wide range of applications

Up to three stage positions accommodate 24, 96, 384 and 1536 well plates, as well as reagent reservoirs and other industry standard format labware

The compact design fits on any lab bench and in most laminar flow hoods, for use under sterile conditions

VIAFLO 96 | VIAFLO 384

24, 96 and 384 channel handheld electronic pipettes

Microplates are commonly used throughout the life sciences sector, as labs try to increase throughput and reduce costs. Tasks such as reagent addition, plate replication and sample dilution routinely require aspiration or dispensing in every well of a plate, so if you're still using an 8, 12 or 16 channel pipette for these applications, then let INTEGRA show you a better way.

VIAFLO 96 and **VIAFLO 384** allow you to pipette 24, 96 or 384 channels in a single step, with the same intuitive ease of use as a handheld electronic pipette. With a choice of up to 10 interchangeable pipetting heads and up to three microplate positions on the deck, this can help you to significantly increase your throughput and reproducibility, without the cost or complexity of laboratory robots. The systems even offer a hands-free automatic mode, helping to ensure protocols are performed in the same way each time.

“The VIAFLO 96 | VIAFLO 384 has significantly improved the accuracy and reproducibility of our pipetting; there is no human hand that can manually pipette into a 384 well plate with the same accuracy.”



Dr. Wissam Mansour
Anima Biotech,
Israel



* shown with optional three position stage

VIAFLO 96

If you routinely fill 24 or 96 well microplates with buffers or reagents, then the **VIAFLO 96** is for you. This handheld pipette is designed to fit on any lab bench, offering simultaneous pipetting for 24 or 96 channels. As easy to use as a traditional handheld pipette, it can streamline your routine pipetting while ensuring superior accuracy.



VIAFLO 384

Assay miniaturization has helped many labs to drive down costs and increase throughput, but manual pipetting into 384 or 1536 well plates can be tedious and error prone. The **VIAFLO 384** overcomes this issue, using a 384 channel head, bringing the same speed and convenience offered by the popular **VIAFLO 96** to higher density plate formats – as well as giving you the flexibility to fill 24 or 96 well plates.

Accelerated workflows

The combination of ease of use and advanced pipetting features in **VIAFLO 96** and **VIAFLO 384** make them ideal for:



Reservoir to plate transfers

- Compound addition
- Medium exchange
- Cell seeding
- Addition of buffers and reagents

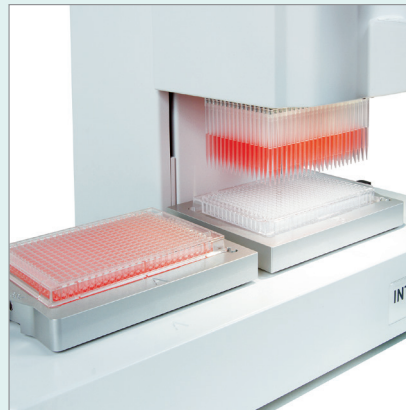
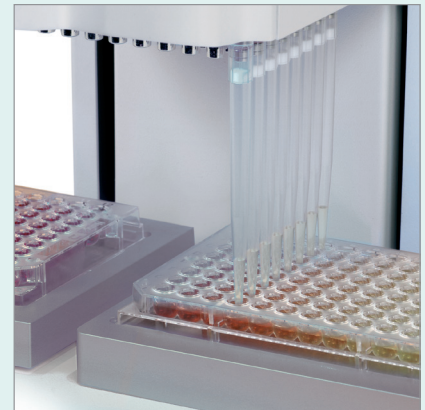


Plate-to-plate transfers

- Plate duplication
- Supernatant transfers/collections
- Plate reformatting

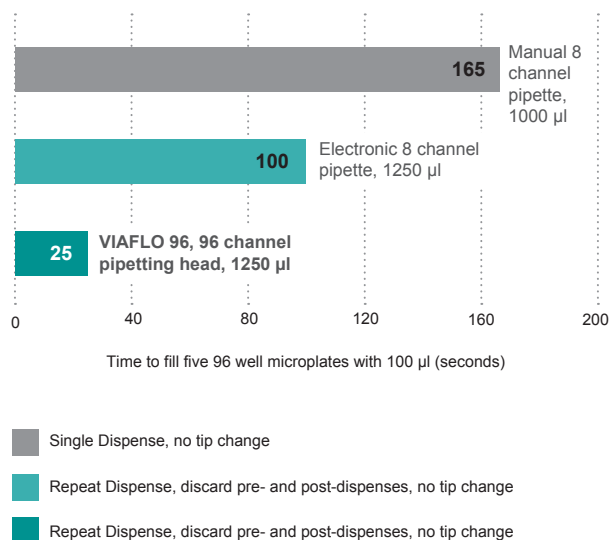


Sample transfers within plates

- Serial dilutions
- Mixing and resuspension

Accelerated pipetting

VIAFLO 96 and **VIAFLO 384** offer unmatched speed when transferring 24, 96, or 384 samples at once – approximately 4x faster than an electronic 8 channel pipette. This set-up provides better accuracy and precision while minimizing the risk of pipetting errors. To further increase pipetting speeds, you can even set multiple exact aspiration and dispense heights, helping you to avoid disturbing cell layers or precipitates and preventing the pipette tips from impacting the bottom of a plate. The system even offers an automatic pipetting mode and password protection for programs, helping to ensure SOPs are followed precisely, and simplifying operation where space is restricted.



Did you know?

The **VIAFLO 96** and **VIAFLO 384** offer a hands-free automatic mode to ensure that tasks are performed the same every single time.

Intuitive operation – handheld or hands-free

A key benefit of the **VIAFLO 96** and **VIAFLO 384** is that they are so easy to use without special training or programming expertise. Simply grip the handle and move the pipetting head as effortlessly as a single channel pipette. Or take advantage of the hands-free automatic mode for maximum reproducibility, especially in tight spaces such as a laminar flow cabinet.

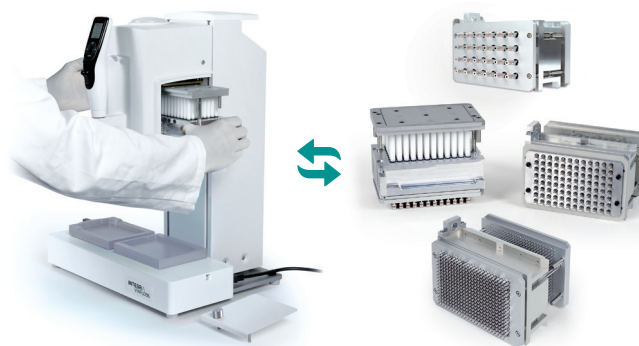
Simple handling – up to three deck positions

Each instrument offers a choice of 10 predefined pipetting modes to help you perform common liquid handling tasks. Or you can use the touch wheel-controlled graphical user interface to build programs to suit your lab's individual workflows. Up to three working positions are available to greatly increase productivity and reduce the time spent moving labware onto and off of the instrument.



Choice of pipetting heads

VIAFLO 96 and **VIAFLO 384** are available with a number of user-exchangeable pipetting heads, making it easy to adapt the instrument to your different workflows. Simply select the number of channels to match your application, and install your head in under one minute! Each channel has its own precise piston and seal. This eliminates cross-channel influences to deliver error-free pipetting for complete or partial plates.

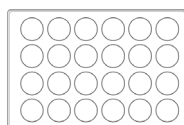


24 Channel Pipetting Heads

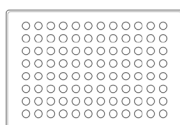
(for VIAFLO 96 and VIAFLO 384)



Compatible plates:



24



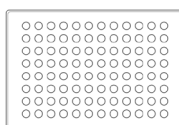
96

96 Channel Pipetting Heads

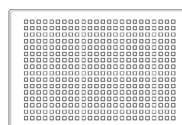
(for VIAFLO 96 and VIAFLO 384)



Compatible plates:



96



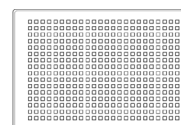
384

384 Channel Pipetting Heads

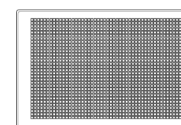
(only for VIAFLO 384)



Compatible plates:



384



1536



Space-saving design

The system's compact benchtop design takes up minimal space, and fits into most laminar flow hoods. Each system features two or three positions for labware. A variety of interchangeable plate holders are available to suit your application – including a sliding, three-position stage for SLAS-format plates – and up to 8 microplates can be stacked on each position to further extend the flexibility of the system.

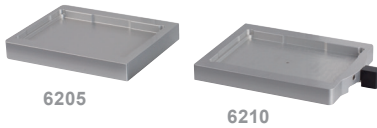


GripTips for reliable pipetting results

The **VIAFLO 96** and **VIAFLO 384** feature INTEGRA's advanced GripTip system, which ensures perfect alignment and eliminates the risk of loose or leaking tips. These high quality tips provide a perfect seal and are comfortably loaded and ejected without any physical effort due to a power assisted mechanism activated by a push button. They are available in a range of volumes – as well as sterile filtered configurations – to suit your application.

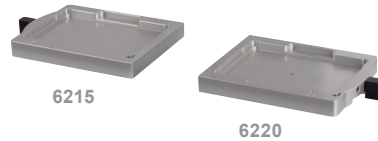
Plate holder options

VIAFLO 96 and **VIAFLO 384** feature two deck positions (A and B) to accommodate different plate holders. They can be removed and replaced by another option any time to adapt the instrument to various application requirements.



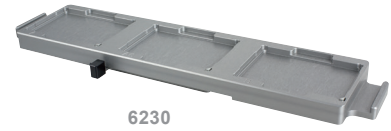
Standard plate holder Plate holder with slide function

For 24 and 96 channel pipetting. The standard plate holder (6205) is used for simple 24 or 96 well transfers. The plate holder with slide function (6210) enables a grid offset to access 384 well plates with a 96 channel head.



Spring loaded plate holder with slide function

For 24, 96 and 384 channel pipetting. Available for position A (6215) and B (6220), these plate holders feature a spring load mechanism to secure microplates in place. Recommended for applications that require an exact plate positioning. Both holders also feature the slide function.



Three position stage

For 96 and 384 channel pipetting. The stage provides three plate holder positions. Move the stage to the left and right to work with all three positions. It features the spring mechanism and slide function on all three positions. The three position stage occupies both deck positions A and B and cannot be combined with another plate holder.



Plate holder for 24 well plate

For 24 channel pipetting. This plate holder is needed to load tips, as well as reformat from 24 to 96 wells. Plate holder can be used for either position A or B.



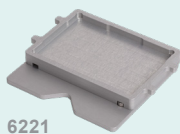
Adjustable spring loaded plate holders with slide function – 384 well plate offset

For 24, 96 and 384 channel pipetting. Available for positions A (6223) and B (6224) these plate holders feature a slide function to access 384 well plates with a 96 channel head. A spring load mechanism secures the microplate in place. Both holders are adjustable in Y direction to allow an optimal alignment of the pipetting head with the target plate. Recommended for 384 well plates with small wells, such as round well plates.



Adjustable spring loaded plate holders with slide function – 1536 well plate offset

For 24, 96 and 384 channel pipetting. Available for positions A (6225) and B (6226) these plate holders feature a slide function to pipet into 1536 well plates with a 384 channel pipetting head. A spring load mechanism secures the microplate in place. Both holders are adjustable in Y direction to allow an optimal alignment of the pipetting head with the target 1536 well plate.



Row dilution plate holder

In addition to serial dilutions in columns, this plate holder enables serial dilutions in rows. It works for 24, 96 and 384 well plates.

Ordering information

Visit the *parts and numbers* section on our website to view all available accessories and consumables.

1. Choose a base instrument	
Description	Part no.
VIAFLO 96 – 24 and 96 channel handheld pipette	6001
VIAFLO 384 – 24, 96, and 384 channel handheld pipette	6031

2. Select one or more pipetting heads				
Description	Volume	Part no.	VIAFLO 96 Compatibility	VIAFLO 384 Compatibility
24 channel pipetting heads	10 – 300 µl	6123	✓	✓
	50 – 1250 µl	6124	✓	✓
96 channel pipetting heads	0.5 – 12.5 µl	6101	✓	✓
	2 – 50 µl	6106	✓	✓
	5 – 125 µl	6102	✓	✓
	10 – 300 µl	6103	✓	✓
	50 – 1250 µl	6104	✓	✓
384 channel pipetting heads	0.5 – 12.5 µl	6131	-	✓
	2 – 50 µl	6136	-	✓
	5 – 125 µl	6132	-	✓

3. Add one plate holder for each deck position on A and B – For more plate holder options, please refer to our website.	
Description	Part no.
Standard Plate Holder – For 24 and 96 channel applications	6205
Plate Holder with slide function – For plate reformatting 96 well ↔ 384 well	6210
Spring Loaded Plate Holder A with slide function – Recommended for 384 well applications and plate reformatting	6215
Spring Loaded Plate Holder B with slide function – Recommended for 384 well applications and plate reformatting	6220
Three Position Stage (occupies both deck positions A and B) – Suitable for 96 and 384 well applications	6230

GripTips for use with VIAFLO 96 and VIAFLO 384 – For more GripTip options, including Low Retention, Wide Bore, and long/short versions, please refer to our website.				
Description		Filter Sterile Part no.	Sterile Part no.	Non-sterile Part no.
12.5 µl	5 XYZ racks of 384 tips	6455	6454	6453
50 µl / 125 µl	5 XYZ racks of 384 tips	6465	6464	6463
300 µl	5 racks of 96 tips	6435	6434	6433
	GREENCHOICE Refills, 5 inserts of 96 tips	-	-	6432
1250 µl	5 racks of 96 tips	6445	6444	6443
	GREENCHOICE Refills, 5 inserts of 96 tips	-	-	6442

Technical data	VIAFLO 96	VIAFLO 384
Channels	24, 96	24, 96, 384
Pipetting technology	air displacement	
Compatible plate formats	24, 96, 384, and 1536 well microplates, shallow and deep well	
Dimensions (W x D x H)	42 cm x 30 cm x 54 cm (17" x 12" x 21")	
Weight	25.7 kg (56.7 lbs)	27.7 kg (61.1 lbs)
Operating conditions	Temperature: 5 °C – 40 °C, Humidity: < 85 % non-condensing	
Power requirements	100 – 240 VAC, 50/60 Hz	

Head specifications	6101 / 6131	6106 / 6136	6102 / 6132	6103 / 6123	6104 / 6124
Part no.					
Vol. Range	0.5 – 12.5 µl	2 – 50 µl	5 – 125 µl	10 – 300 µl	50 – 1250 µl
Accuracy	± 1.5 %	± 1.5 %	± 1.5 %	± 1.2 %	± 1.8 %
Precision	≤ 1.0 %	≤ 1.0 %	≤ 1.0 %	≤ 0.8 %	≤ 0.8 %

Specifications presented for nominal volume. Please refer to our website for a complete list of specifications.



INTEGRA Biosciences AG
7205 Zizers, Switzerland
T +41 81 286 95 55
F +41 81 286 95 07
info@integra-biosciences.com

INTEGRA Biosciences Corp.
Hudson, NH 03051, USA
T +1 603 578 5800
F +1 603 577 5529
info-us@integra-biosciences.com

INTEGRA Biosciences Ltd.
Thatcham, Berks RG19 4EP, UK
T +44 1635 797000
F +44 1635 797001
info-uk@integra-biosciences.com

