

sparQ DNA Frag & Library Prep Kit

Cat. No. 95194-024
95194-096

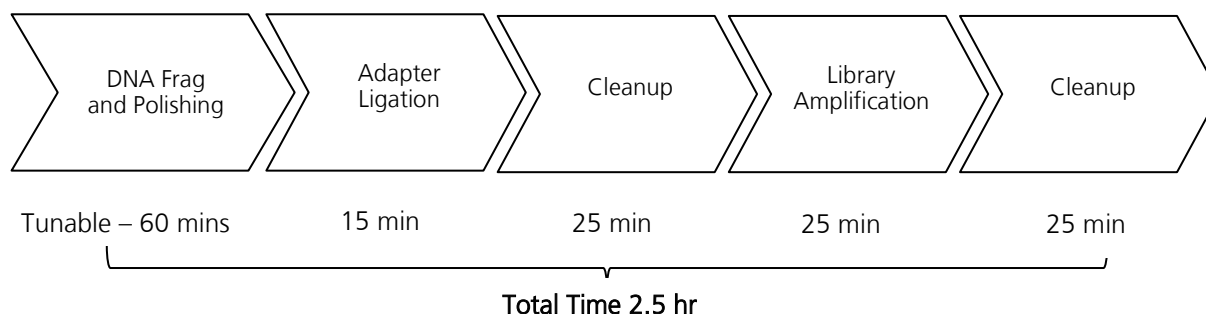
Size: 24 reactions
96 reactions

Store at -25°C to -15°C

Description

The sparQ DNA Frag & Library Prep Kit provides reagents essential for enzymatic fragmentation of DNA and the construction of libraries for sequencing on NGS platforms. The streamlined workflow can be completed in under 3 hours with minimal hands-on time and accommodates DNA input amounts from 1 ng to 1000 ng. The DNA fragmentation and end-polishing reactions are combined in a single step producing fragmented DNA that is taken through 5'-phosphorylation and 3'-dA-tailing polishing reactions. Fragment size is tunable based on reaction time. Subsequent ligation of sequencing adapters can be performed without the need for an intervening cleanup step. The optional HiFi PCR Master Mix and Primer Mix allow unbiased amplification of fragments with appropriate adapters ligated to both ends. PCR-Free workflows are enabled from as little as 100 ng of starting material.

Workflow Overview



Instrument Compatibility

The kit is compatible with Illumina, Element and Singular sequencing instruments. This IFU is for use with Illumina sequencing instruments.

Components

	Component Description	Cap Color	Volume	
			24 Reactions	96 Reactions
●	DNA Frag & Polishing Enzyme Mix (5X)	Blue	1 x 240 µl	1 x 960 µl
●	DNA Frag & Polishing Buffer (10X)	Blue	1 x 120 µl	1 x 528 µl
●	DNA Frag & Polishing Enhancer Solution	Blue	1 x 288 µl	1 x 264 µl
●	DNA Ligase	Orange	1 x 240 µl	1 x 960 µl
●	DNA Rapid Ligation Buffer (5X)	Orange	1 x 480 µl	2 x 960 µl
○	HiFi PCR Master Mix (2X)	White	1 x 600 µl	2 x 1.2 ml
○	Primer Mix	White	1 x 72 µL	1 x 144 µl

Storage and Stability

Store kit components in a constant temperature freezer at -25°C to -15°C upon receipt. For lot specific expiry date, refer to package label, Certificate of Analysis or Product Specification Form.

Additional reagents and materials that are not supplied

Purification Beads

Purification beads for post-ligation and post-amplification reaction cleanups are not included with the kit and must be purchased separately. This protocol has been validated using either sparQ PureMag Beads or AMPure® XP (Beckman Coulter). We recommend using sparQ PureMag Beads from Quantabio.

Part Number	Description	Kit Size
95196-005	sparQ PureMag Beads	5 ml
95196-060	sparQ PureMag Beads	60 ml
95196-450	sparQ PureMag Beads	450 ml

Adapters

The sparQ DNA Frag & Library Prep Kit does not include adapters, sparQ UDI Adapters must be purchased separately. The sparQ DNA Frag and Library Prep Kit is also compatible with other Y-shaped adapters including non-barcoded, stubby, single-barcoded, or dual-barcoded adapters (with or without unique molecular identifiers) routinely used in library construction workflows. If using third party stubby (truncated) adapters, uniquely indexed PCR primers must also be purchased separately.

Part Number	Description	Kit Size
95211-096	sparQ UDI Adapters	96 rxn

NGS Library Quantification Kit

Accurate quantification of DNA libraries is recommended for optimizing downstream processes such as target capture and sequencing. Quantabio offers the sparQ Universal Library Quant Kit to quantify library molecules with appropriate Illumina P5/P7 adapters at each end.

Part Number	Description	Kit Size
95210-100	sparQ Universal Library Quant Kit	100 rxn
95210-500	sparQ Universal Library Quant Kit	500 rxn
95210-15B	sparQ Library Dilution Buffer	15 ml

General Guidelines

- Enzyme-based DNA fragmentation is sensitive to many factors, such as reaction temperature, time, setup conditions, as well as the physical properties and amount of and input DNA. We strongly recommend practicing the fragmentation tuning protocol outlined in **Appendix B** and optimizing parameters (*i.e.* reaction time) using a DNA that is representative of experimental DNA samples.
- Use good laboratory practices to minimize cross-contamination of nucleic acid products.
- Use PCR-grade, nuclease-free water. Do not use DEPC-treated water.
- Always use PCR tubes, microfuge tubes, and pipette tips that are certified sterile, DNase- and RNase-free.
- Thin-walled tubes with good heat transfer are recommended for the fragmentation reactions.
- For consistent reaction conditions, ensure the thermal cycler used in this protocol is in good working order and has been calibrated to within the manufacturer's specifications.
- Briefly centrifuge tubes prior to opening to avoid loss of material.
- Read the entire protocol before beginning. Take note of stopping points where samples can be frozen at -20°C and plan your workflow accordingly.
- Different workflows require differing amounts of DNA Frag & Polishing Enhancer Solution. Discard any unused Enhancer Solution at completion of kit usage.



Point in protocol where procedure can be stopped and stored at appropriate conditions outlined



Take note of recommendations in protocol



Use caution to obtain the best results when performing protocol

Before You Begin

- It is important to remove all cations and chelators from DNA preparations. Make sure input DNA is in water, 10 mM Tris-HCl (pH 8.0), buffer EB, or 0.1X TE buffer. If the DNA was dissolved in 1X TE or the EDTA concentration in the input DNA solution is unknown, we strongly recommend purifying the DNA using the sparQ PureMag Beads following the instructions in **Appendix A**.
- Prepare a fresh solution of 80% ethanol, store at room temperature.
- Prepare a solution of 10 mM Tris-HCl, pH 8.0, store at room temperature.
- Prepare UDI Dilution Buffer (10 mM Tris-HCl, pH 8.0, 50 mM NaCl, 0.5 mM EDTA) if adapter dilution is needed.
- Wipe down work areas and pipettes with an RNase and DNA cleaning product.
- Thaw reagents on ice. Once thawed, finger flick (do not vortex) the tubes containing DNA Frag & Polishing Enzyme Mix, DNA Ligase, and HiFi PCR Master Mix to ensure even distribution of contents. Other tubes can be briefly vortexed to ensure mixing.
- Determine the concentration of input DNA using standard methods.

Protocol

This protocol involves the preparation of master mixes for each reaction step. We recommend each master mix is prepared immediately before use. However, master mixes may be prepared in advance if used on the same day. Keep all master mixes on ice until use.

Single-Step DNA Frag and Polishing

1. Program the thermal cycler with the parameters in the table below. If possible, set the heated lid to 70°C. When the thermal cycler block reaches 32°C, pause the program.



Note: Use of heated lid at >70°C may affect the temperature of the fragmentation reaction.

Step	Temperature (lid 70°C)	Incubation Time
1	32°C	Varies based on input amount *
2	65°C	30 min
3	4°C	Hold



** Average fragment size is tunable based on incubation time and DNA input amount. The table below provides guidelines to achieve the desired fragment peak size for different input amounts. To determine your optimal fragmentation time, refer to the detailed protocol in Appendix B*

Guidelines for Choosing Fragmentation Time

Fragment Peak Size	Fragmentation Time (min) at 32°C			
	250 bp	350 bp	450 bp	550 bp
10 ng input DNA	24	16	14	10
100 ng input DNA	16	10	8	6
1000 ng input DNA	14	8	6	4

Note: The exact reaction time may need to be optimized by the end user. Detailed guidance is provided in **Appendix B**. Larger insert sizes can be achieved by incubating at 25°C instead of 32°C. Please refer to the application note, "Increased control over longer DNA fragmentation patterns using lower temperature with sparQ DNA Frag & Library Prep Kit", for further instructions.



Note: This protocol is suitable for 1 - 1000 ng input purified DNA. We recommend that the DNA be in 10 mM Tris-HCl, pH 8.0 buffer or buffer EB, but LoTE and nuclease-free water are also acceptable. If the input DNA volume is less than 35 µL, add nuclease-free water to a final volume of 35 µL (32.5 µL when using input <10 ng).

- Prepare the DNA Frag and Polishing Master Mix on ice according to the relevant table below. For DNA input amounts <10 ng, the indicated volume of DNA Frag Enhancer Solution should be added to the reaction. Volumes can be scaled as needed for the desired number of samples. Mix well by gently pipetting.

For Input DNA > 10 ng

	Components	Per Reaction (µl)
●	DNA Frag & Polishing Buffer (10X)	5
●	DNA Frag & Polishing Enzyme Mix (5X)	10
	Total	15

For Input DNA 1 – 10 ng

	Components	Per Reaction (µl)
●	DNA Frag & Polishing Buffer (10X)	5
●	DNA Frag & Polishing Enzyme Mix (5X)	10
●	DNA Frag & Polishing Enhancer Solution	2.5
	Total	17.5

- For input >10 ng:** Transfer **35 µl** DNA to a new thin-walled PCR tube for each reaction. Add **15 µl** of the DNA Frag & Polishing Master Mix from step 2 and gently mix well by pipetting up and down 10-12 times. It is critical to keep the tubes on ice during reaction setup.

For input DNA 1 -10 ng: Transfer **32.5 µl** DNA to a new thin-walled PCR tube for each reaction. Add **17.5 µl** of the DNA Frag & Polishing Master Mix from step 2 and gently mix well by pipetting up and down 10-12 times. It is critical to keep the tubes on ice during reaction setup.

- Pulse-spin the sample tubes and immediately transfer to the pre-heated thermal cycler (32°C). Resume the cycling program.
- When thermal cycler program is complete and block temperature has returned to 4°C, remove the sample tubes from the block and place on ice.
- Immediately proceed to the adapter ligation step.

Adapter Ligation

Adapters may need to be diluted using UDI Dilution Buffer (10 mM Tris-HCl, pH 8.0, 50 mM NaCl, 0.5 mM EDTA) before use. To achieve optimal adapter ligation efficiency for various input DNA amounts, it is recommended to adjust insert/adapter molar ratio accordingly. The following table provides general guidance on recommended sparQ UDI or third party stubby (truncated) adapter concentrations for 250 bp DNA fragments.



Detailed guidance is provided in Appendix C.

Total DNA Input (250 bp Fragments)	Dilution of sparQ UDI Adapters	Dilution of 15 µM Stubby Adapters
500 - 1000 ng	None	None
100 - 499 ng	1:2	None
10 - 99 ng	1:25	None
1 - 9 ng	1:500	1:10

- Transfer **4 µl** of appropriately diluted adapters into the PCR tube with **50 µl** of fragmented DNA from step 5. Mix gently by pipetting and cool on ice.



Use caution when pipetting adapters. Avoid touching the tube with any part of your pipette other than pipette tips to minimize potential cross contamination.

- Prepare the Ligation Master Mix in a separate tube on ice per the table below. Mix well by pipetting. Volumes can be scaled as needed for the desired number of samples.

	Components	Volume for 1 Reaction (µl)
●	DNA Rapid Ligation Buffer (5X)	20
●	DNA Ligase	10
	Nuclease-free H ₂ O	16
	Total	46

- Add **46 µl** of the Ligation Master Mix to the **54 µl** fragmented DNA and adapters sample from step 7 and mix well by pipetting.
- Incubate the ligation reaction according to below table without enabling the heated lid.

Step	Temperature (lid off)	Incubation Time
1	20°C	15 min
2	4°C	Hold

- Proceed immediately to adapter ligation cleanup using sparQ PureMag Beads.

Adapter Ligation Cleanup



Adapter ligation cleanup can be carried out in the PCR tube if a suitable magnetic stand is available. Alternatively, the full reaction volume can be transferred to low-bind 1.5 ml tubes for cleanup. If proceeding to library amplification following cleanup, the final elution must be collected into a thin-walled PCR tube.

If size selection is required, follow instructions in **Appendix D**. Size selection is not recommended for inputs <100 ng.

- Equilibrate the sparQ PureMag Beads to room temperature (RT) for 20 min.
- Thoroughly vortex the sparQ PureMag Beads slurry and add **80 µl** (0.8X) to the ligation sample from step 10. Mix well by pipetting.
- Incubate the mixture for 5 min at RT. Pellet the beads on a magnetic stand (e.g., DynaMag™) and carefully remove and discard the supernatant.
- Keeping the tube on the magnetic stand, gently pipette **200 µl** of the freshly-prepared 80% ethanol over the bead pellet to wash. Pellet the beads on the magnetic stand for 30 s then carefully remove and discard the supernatant. Repeat step 15 for a total of two washes.
- Use a 10 µl pipette to remove any excess ethanol from the bottom of the tube.
- Air-dry the beads on the magnetic stand for 3 - 5 min or until the beads the bead pellet appears matte and no longer shiny. Over-drying of beads may result in lower DNA recovery.
- Full-length Y-shaped adapters such as the sparQ UDI Adapters allow for PCR-free library preparation when starting from DNA input amounts > 100 ng. Library amplification is required for stubby adapters. Please choose carefully from the following options depending on the adapter type used for this preparation.





a. **If full-length Y-shaped adapters (ie. sparQ UDI Adapters) were used and optional library amplification is intended:** Resuspend the dried beads in **25.5 μ l** of 10 mM Tris-HCl, pH 8.0. Incubate the beads at room temperature for 2 - 3 min. Pellet the beads on the magnetic stand. Carefully transfer **23.5 μ l** of supernatant into a new thin-walled PCR tube and proceed to library amplification. If not proceeding immediately, the sample can be stored at -20°C .



b. **If full-length Y-shaped adapters (ie. sparQ UDI Adapters) were used and library amplification is not intended:** Resuspend the dried beads in **12.5 μ l** of 10 mM Tris-HCl, pH 8.0. Incubate the beads at room temperature for 2 - 3 min. Pellet the beads on the magnetic stand. Carefully transfer **10 μ l** of supernatant into a new thin-walled PCR tube and proceed to validation and quantification of the library using gel electrophoresis, qPCR and/or Bioanalyzer®. An additional 0.9X sparQ PureMag Beads purification may be added if significant adapter and/or adapter dimer are detected. If not proceeding immediately, the sample can be stored at -20°C .



c. **If stubby (truncated) adapters were used in adapter ligation:** Resuspend the dried beads in **22 μ l** of 10 mM Tris-HCl, pH 8.0. Incubate the beads at room temperature for 2 - 3 min. Pellet the beads on the magnetic stand. Carefully transfer **20 μ l** of supernatant into a new thin-walled PCR tube and proceed to library amplification. If not proceeding immediately, the sample can be stored at -20°C .

Library Amplification



Library amplification is generally recommended if the input DNA is below 100 ng. The PCR reagents (HiFi PCR Master Mix and Primer Mix) can be used for high-fidelity amplification of the DNA library. The Primer Mix contains both forward and reverse primers and is compatible with libraries prepared with full-length Y-shaped adapters (ie. sparQ UDI Adapters) and flanked by the standard P5 and P7 sequences. Follow the steps on the left to prepare the amplification reaction.

If stubby (truncated) adapters were used during ligation, unique index primers must be purchased separately for use during amplification. Follow the steps on the right to prepare the amplification reaction.

Library Amplification for Full-Length Y-shaped Adapters

19. Prepare the PCR Master Mix in a separate tube on ice by combining the HiFi PCR Master Mix (2X) and Primer Mix per the table below. Mix well by pipetting. Volumes can be scaled as needed for the desired number of reactions.

	Components	Per Reaction (μ l)
○	HiFi PCR Master Mix (2X)	25
○	Primer Mix	1.5
	Total	26.5

20. Add **26.5 μ l** of the PCR Master Mix from step 19 to the **23.5 μ l** of DNA sample from step 18a in the thin-walled PCR tube and mix gently by pipetting up-and-down 8 - 10 times. Keep the PCR tube on ice during reaction setup. Proceed to step 21.

Library Amplification for Stubby Adapters

19. Due to the need for unique index primers for each sample when using stubby (truncated) adapters, ***it is not recommended to prepare a master mix for library amplification.*** The table below shows the volumes of each reagent in the final reaction for convenience.

	Components	Per Reaction (μ l)
○	HiFi PCR Master Mix (2X)	25
	Indexed Primer Mix (10 μ M)	5
	Purified, adapter-ligated DNA	20
	Total	50

20. To the **20 μ l** of purified, adapter-ligated DNA from step 18c, add **25 μ l** HiFi PCR Master Mix and **5 μ l** of the specific indexed primer for a total reaction volume of 50 μ l. Mix gently by pipetting up-and-down 8-10 times. Keep the PCR tube on ice during reaction setup. Proceed to step 21.

21. Program a thermal cycler with the parameters listed in the table below. Set the instrument's heated lid to 105°C. When the thermal cycler block reaches 98°C, pause the program.

Step	Temperature (lid 105°C)	Incubation Time	Cycles
1	98°C	2 min	1
2	98°C	20 sec	Varies based on input amount – see table below
3	60°C	30 sec	
4	72°C	30 sec	
5	72°C	1 min	1
6	4°C	Hold	1

Note: Excessive library amplification increases the likelihood of amplification bias and the generation of unwanted artifacts. Therefore, it is recommended to limit the number of amplification cycles to the minimum needed to achieve acceptable yield for downstream processes. Yields in the range of 250 – 1000 ng are typically sufficient for target capture and sequencing applications. The table below provides guidelines on the number of cycles to yield 500 ng of DNA library from various sample input amounts.



Input DNA Sample Amount (ng)	Suggested Number of Cycles
500 - 1000	2 - 3
100 - 499	4 - 5
50 - 99	5 - 6
10 - 49	8 - 10
1 - 9	13 - 15

22. Pulse-spin the sample tube and immediately transfer to the pre-heated thermal cycler (98°C). Resume the cycling program.
23. When the thermal cycler program is complete and sample block has returned to 4°C, remove the sample from the block and proceed immediately to post-amplification cleanup using sparQ PureMag Beads (step 25).

Post-Amplification Cleanup

24. Equilibrate the sparQ PureMag Beads to RT for 20 min.
25. Thoroughly vortex the sparQ PureMag Beads slurry and add **45 µl** (0.9X) to the PCR reaction. Mix well by pipetting.
26. Incubate the mixture for 5 min at RT. Pellet the beads on a magnetic stand (e.g., DynaMag) and carefully discard the supernatant.
27. Keeping the tube on the magnetic stand, gently pipette **200 µl** of the freshly-prepared 80% ethanol over the bead pellet to wash. Pellet the beads on the magnetic stand for 30 s then carefully remove and discard the supernatant. Repeat step 27 for a total of two washes.
28. Use a 10 µl pipette to remove any excess ethanol from the bottom of the tube.
29. Air-dry the beads on the magnetic stand for 3 - 5 min or until the bead pellet appears matte and no longer shiny. Over-drying of beads may result in lower DNA recovery.
30. Resuspend the dried beads in **32.5 µl** of 10 mM Tris-HCl, pH 8.0. Incubate the beads at room temperature for 2 - 3 min. Pellet the beads on the magnetic stand. Carefully transfer **30 µl** of supernatant into a new tube. The sample can be stored at -20°C if not proceeding immediately to library quantification or other downstream processes.



Library Validation and Quantification

DNA libraries constructed using the above instructions should be validated and quantified to ensure optimal input for sequencing reactions.

Average fragment length can be measured using a digital electrophoresis system such as the Agilent 2100 Bioanalyzer® or Agilent 2200 TapeStation® per manufacturer instructions. Special care must be taken for accurate validation of PCR-free libraries. For more information and step-by-step instructions, please refer to the application note, "Quality Control for PCR-Free WGS Libraries: A Guideline for TapeStation Analysis of PCR-Free Library Preparation with Y-Shaped Adapters".

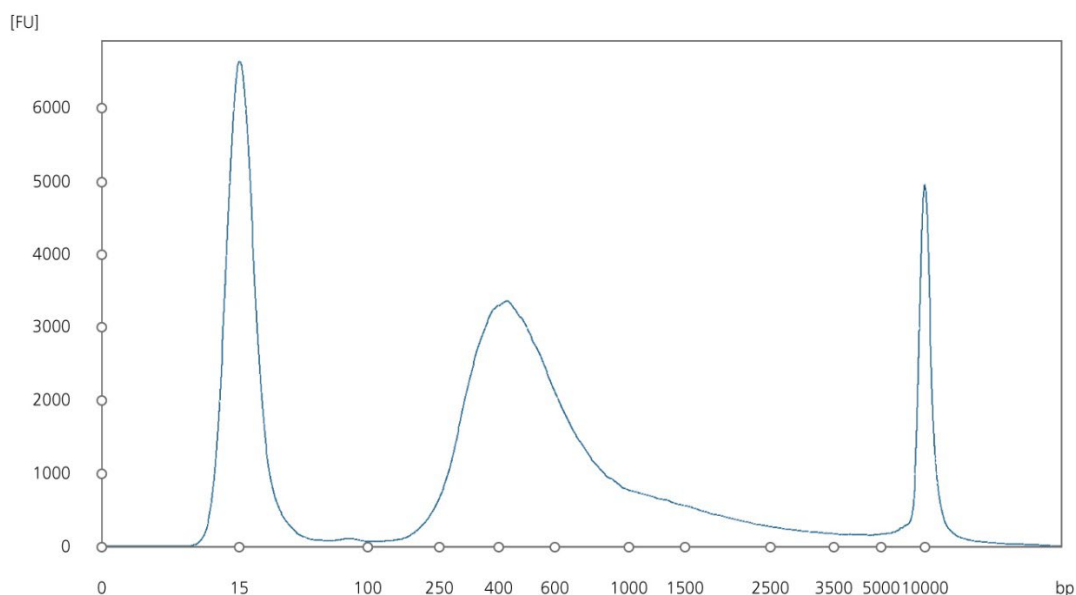


Figure 1: Typical Agilent TapeStation trace of prepared library using sparQ DNA Frag and Library Prep Kit. Library was prepared using 500 ng input hgDNA, fragmented for 15 min and ligated with sparQ UDI adapters. Following post-ligation cleanup, libraries were amplified with 2 PCR cycles. Peaks at 15 and 10000 bp represent low and high MW markers.

An estimate of library concentration can be assessed using Qubit® or another fluorometric method.

More accurate library quantification can be obtained using a qPCR-based assay. Quantabio offers the sparQ Universal Library Quant Kit (95210-100, 95210-500) for accurate quantification of DNA library molecules suitable for sequencing on Illumina NGS platforms.



Quality Control

Contamination specifications: Kit enzyme components were tested prior to assembly and found free of contaminating endonucleases and exonucleases. Enzyme purity was >95% as determined by SDS-PAGE and negligible *E.coli* genomic DNA contamination was confirmed by qPCR.

Functional specifications: QC Library length must be within 15% of the reference library length. Concentration of the QC library generated from 100 ng input DNA (average ~300 bp fragments) is >60 nM with mapped reads >90%. For QC library, normalized coverage should be within 0.7 to 1.3 for most of the genome (10% - 80% GC content).

Limited Label Licenses

Use of this product signifies the agreement of any purchaser or user of the product to the following terms:

1. The product may be used solely in accordance with the protocols provided with the product and this manual and for use with components contained in the kit only. Quantabio, LLC. grants no license under any of its intellectual property to use or incorporate the enclosed components of this kit with any components not included within this kit except as described in the protocols provided with the product, this manual, and additional protocols available at www.quantabio.com. Some of these additional protocols have been provided by Quantabio product users. These protocols have not been thoroughly tested or optimized by Quantabio, LLC. Quantabio, LLC. neither guarantees them nor warrants that they do not infringe the rights of third-parties.
2. Other than expressly stated licenses, Quantabio, LLC. makes no warranty that this kit and/or its use(s) do not infringe the rights of third-parties.
3. This kit and its components are licensed for one-time use and may not be reused, refurbished, or resold.
4. Quantabio, LLC. specifically disclaims any other licenses, expressed or implied other than those expressly stated.
5. The purchaser and user of the kit agree not to take or permit anyone else to take any steps that could lead to or facilitate any acts prohibited above. Quantabio, LLC. may enforce the prohibitions of this Limited License Agreement in any Court, and shall recover all its investigative and Court costs, including attorney fees, in any action to enforce this Limited License Agreement or any of its intellectual property rights relating to the kit and/or its components.

©2021 Quantabio, LLC. 100 Cummings Center Suite 407J Beverly, MA 01915; Telephone number: 1-888-959-5165. Quantabio products are manufactured in Beverly, Massachusetts, Frederick, Maryland and Hilden, Germany. Intended for molecular biology applications. This product is not intended for the diagnosis, prevention or treatment of a disease.

Trademarks

AMPure® XP is a registered trademark of Beckman Coulter. DynaMag™ is a trademark of Thermo Fisher Scientific and its subsidiaries. Illumina® and TruSeq® are registered trademarks of Illumina, Inc. TapeStation® and Bioanalyzer® are registered trademarks of Agilent Technologies, Inc. Qubit® is a registered trademark of Thermo Fisher Scientific. PicoGreen® is a registered trademark of Molecular Probes, Inc.

Appendix A: Removal of Divalent Cations and EDTA from Input Nucleic Acid

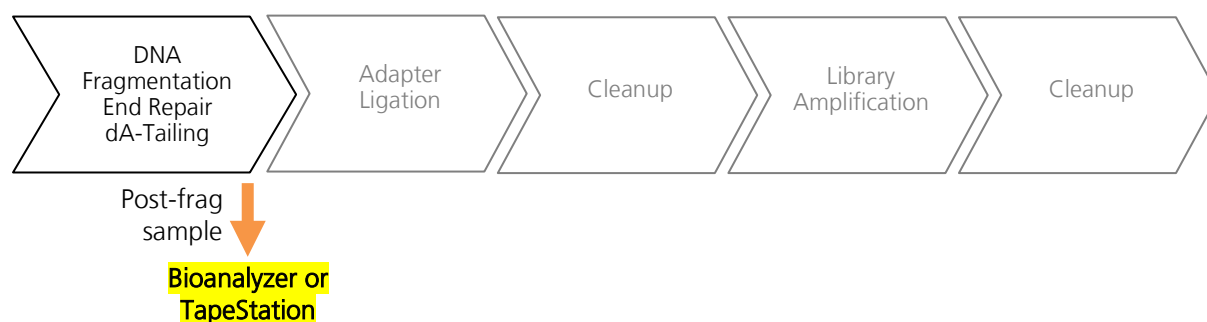
Input DNA for the fragmentation reaction should be in nuclease-free water, 10 mM Tris-HCl (pH 8.0), buffer EB, or LoTE (0.1X TE). If the DNA was dissolved in 1X TE or the concentration of cations and chelators is not known, we strongly recommend purifying the DNA using sparQ PureMag Beads per the instructions below.

1. If DNA is in a volume of less than 50 μl , adjust the volume to **50 μl** with nuclease-free water.
2. Add **90 μl** of thoroughly vortexed sparQ PureMag Beads slurry to the reaction for a ratio of 1.8X and mix well by pipetting. If DNA is in a volume greater than 50 μl , scale the volume of sparQ PureMag Beads appropriately such that the ratio of beads to DNA is 1.8X.
3. Incubate the mixture for 5 min at room temperature. Pellet the beads on a magnetic stand for 2-4 min and carefully discard the supernatant without disturbing the beads.
4. Keeping the tube on the magnetic stand, gently pipette **200 μl** of the freshly prepared 80% ethanol over the bead pellet to wash. Pellet the beads on the magnetic stand for 30 s then carefully remove and discard the supernatant. Repeat the wash for a total of two washes.
5. Use a 10 μl pipette to remove any excess ethanol from the tube.
6. Air-dry the beads on the magnetic stand for 3 - 5 min or until the bead pellet appears matte and no longer shiny. Over-drying of beads may result in lower DNA recovery.
7. Thoroughly resuspend the dried beads in **45 μl** of 10 mM Tris-HCl, pH 8.0 and incubate at RT for 2-3 min. Pellet the beads on the magnetic stand for 2 min or until the solution is clear. Carefully transfer **42.5 μl** of supernatant into a new tube.
8. Determine the concentration of the purified DNA using Qubit[®], PicoGreen[®] or other methods.

Appendix B: Recommended Fragmentation Tuning Protocol

Overview

A key feature of the sparQ DNA Fragmentation & Library Preparation Kit is that the average size of DNA fragments is tunable based on sample type, reaction time, and input amount. Since the source and amount of your experimental sample DNA will differ from any control DNA, optimal reaction conditions should be determined empirically. **Figure 2** (page 12) provides guidance on initial incubation times to test based on DNA input amount. To find the optimal conditions that yield the desired fragment size, we recommend testing timepoints at and around the time determined from **Figure 2**. This fragmentation tuning protocol involves the testing of three incubation times. This is done by adding samples to a thermal block at each test time so that all reactions are completed simultaneously. Samples are collected and purified immediately after the fragmentation and DNA polishing reaction. Bioanalyzer analysis of the collected samples will confirm if one of the timepoints yielded the desired fragmentation.



General Guidelines

- Enzyme-based DNA fragmentation is sensitive to many factors, such as reaction temperature, time, and setup conditions. In tests using your experimental sample, follow the optimization guidelines in this protocol.
- Use good laboratory practices to minimize cross-contamination of nucleic acid products.
- Always use PCR tubes, microfuge tubes, and pipette tips that are certified sterile, DNase- and RNase-free.
- For consistent reaction conditions, ensure the thermal cycler used in this protocol is in good working order and has been calibrated to within the manufacturer's specifications.
- Briefly centrifuge tubes prior to opening to avoid loss of material.
- Read the entire protocol before beginning.



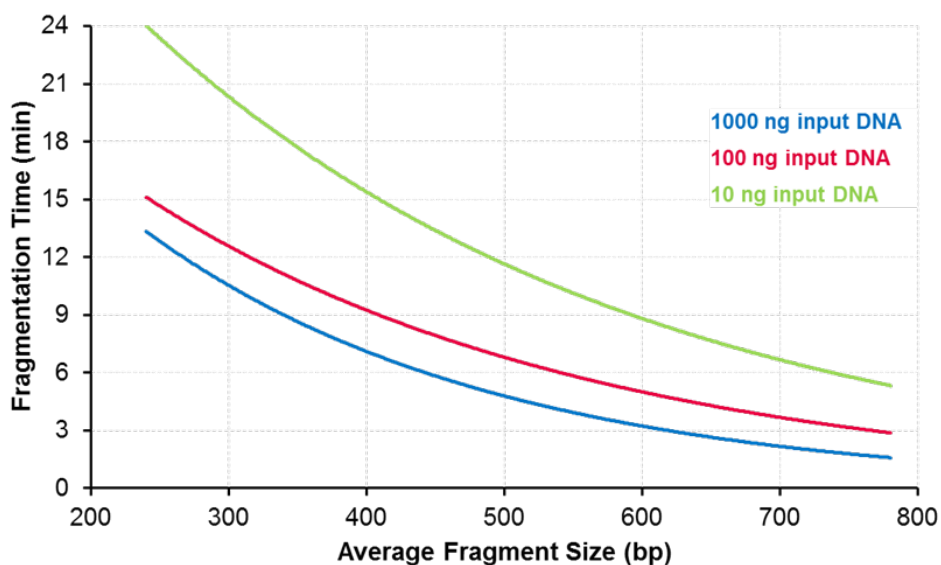
Take note of recommendations in protocol



Use caution to obtain the best results when performing protocol

Before You Begin

- Prepare a fresh solution of 80% ethanol; store at room temperature.
- Prepare a solution of 10 mM Tris-HCl, pH 8.0; store at room temperature.
- Wipe down work areas and pipettes with an RNase and DNA cleaning product.
- Thaw reagents on ice. Once thawed, finger flick (do not vortex) the tube containing DNA Frag & Polishing Enzyme Mix to ensure even distribution of contents. DNA Frag & Polishing Buffer tube can be briefly vortexed to ensure mixing.



Fragmentation Time (min) at 32°C				
Fragment Peak Size	250 bp	350 bp	450 bp	550 bp
10 ng input DNA	24	16	14	10
100 ng input DNA	16	10	8	6
1000 ng input DNA	14	8	6	4

Figure 2: Guidelines for Tuning Fragmentation Size

Optimizing Fragmentation Time for Experimental DNA Samples

1. Single-Step Fragmentation of Experimental Sample DNA

The optimal incubation time to obtain the desired fragment size for the experimental sample DNA must be determined. The chart and table of **Figure 2** provide guidelines of incubation times and expected sizes based on input amount.

- 1.1 Using the table and chart in **Figure 2**, select an incubation time likely to generate fragments of the desired size of your experimental DNA sample. Refer to this time as T-opt. Include two additional time points at 3 minutes shorter and 3 minutes longer than T-opt. Refer to these as T-short and T-long, respectively.

T-opt	Optimal incubation time determined from Figure 2
T-short	T-opt – 3 minutes
T-long	T-opt + 3 minutes

Example fragmentation times, determined from **Figure 2**, are shown in the table below.

Sample Input DNA	Desired Fragmentation Size	T-opt	T-short	T-long
100 ng	450 bp	8 minutes	5 minutes	11 minutes
1000 ng	300 bp	11 minutes	8 minutes	14 minutes

- 1.2 Program a thermal cycler with the parameters in the table below. If possible, set the temperature of the instrument's heated lid to 70°C. When the thermal cycler block reaches 32°C, pause the program.

Step	Temperature (lid 70°C)	Incubation Time
1	32°C	T-long *
2	65°C	30 min
3	4°C	Hold



* T-long is the optimal incubation time plus 3 minutes as described in 1.1 and selected by you.

- 1.3 Prepare a master mix on ice for three identical fragmentation reactions by combining the components listed in the appropriate table below. For DNA input amounts >10 ng, follow the upper table. For DNA input amounts <10 ng, DNA Frag & Polishing Enhancer Buffer should be added to the reaction as per the lower table. Mix well by gently pipetting (do not vortex to mix).

DNA input > 10 ng

	Component	Per Reaction (µl)	For 3 Reactions (+10%)
●	DNA Frag & Polishing Buffer (10X)	5	16.5
	Experimental sample DNA	X	X
	Nuclease-free water	35-X	115.5 - X
	Total	40	132

DNA input 1 - 10 ng

	Component	Per Reaction (µl)	For 3 Reactions (+10%)
●	DNA Frag & Polishing Buffer (10X)	5	107.25
	Experimental sample DNA	X	X
●	DNA Frag & Polishing Enhancer Solution	2.5	8.25
	Nuclease-free water	32.5 - X	97.5 - X
	Total	40	132

- 1.4 Transfer **10 μ l** of the DNA Frag & Polishing Enzyme to each of three new thin-walled PCR tubes, labeled as **S1**, **S2**, and **S3**. Add **40 μ l** of the master mix from step 1.3 to each tube for a final reaction volume of **50 μ l** and gently mix well by pipetting up and down 10-12 times. It is critical that all tubes are kept on ice during reaction setup.
- 1.5 Transfer tube **S1** to the pre-heated thermal cycler (32°C). This will be incubated for the time corresponding to T-long. Keep the other tubes on ice. Resume the cycling program and monitor the countdown for the 32°C incubation time.
- 1.6 Three minutes later, open the lid and add tube **S2** to the thermal cycler. This will be incubated for the time corresponding to T-opt.
- 1.7 Wait another three minutes and open the lid again and add tube **S3** to the thermal cycler. This will be incubated for the time corresponding to T-short.
- 1.8 Allow the remainder of the program to complete. When the thermal cycler temperature has returned to 4°C, remove all tubes from the block and place on ice.

A diagram of the above experimental sample DNA fragmentation procedures is shown in **Figure 3**.

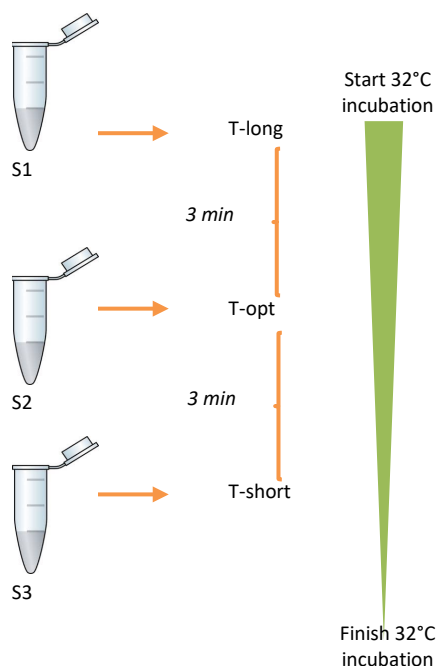



Figure 3: Testing three fragmentation times for the experimental DNA sample

2. Post-Fragmentation Purification of Samples

Upon completion of fragmentation, each sample is taken for purification. These purified samples will be for assessment of the fragmentation size profiles.

- 2.1 Equilibrate sparQ PureMag Beads to room temperature (RT) for 20 min.
- 2.2 Add **90 μ l** of thoroughly vortexed sparQ PureMag Beads slurry to the samples **S1**, **S2**, and **S3** and mix well by pipetting.
- 2.3 Incubate the mixtures for 5 min at RT. Pellet the beads on a magnetic stand (e.g., DynaMag) and carefully discard the supernatant.

2.4 Keeping the tube on the magnetic stand, add **200 μ l** of the freshly-prepared 80% ethanol to wash the beads. Pellet the beads on the magnetic stand for 30 s then carefully remove and discard the supernatant. Repeat the wash for a total of two washes.

 2.5 Air-dry the beads on the magnetic stand for 3 - 5 min or until the beads appear matte and not glossy. Over-drying of beads may result in lower DNA recovery.

2.6 Resuspend the dried beads in **25 μ l** of 10 mM Tris-HCl, pH 8.0. Incubate the beads at room temperature for 2 - 3 min. Pellet the beads on the magnetic stand for 2 min or until the solution is clear. Carefully transfer **22.5 μ l** of each supernatant into new tubes labeled, **S1-long**, **S2-opt**, and **S3-short** and keep on ice until ready to perform Bioanalyzer analysis.

3. Bioanalyzer Analysis of all collected samples

3.1 Apply **1 μ l** of each purified sample on a Bioanalyzer with Agilent High Sensitivity DNA kit to visualize the sample profiles. DNA may need to be diluted before loading. Other automated gel electrophoresis systems, such as the Agilent TapeStation, may also be used.

3.2 Examine the Bioanalyzer profiles of samples S1-long, S2-opt, and S3-short. Select the fragmentation time that corresponds to your target fragment size and circle that time in section 1.1 on page 12. This is the time you will use in your experimental protocol.

3.3 As an example, 1,000 ng of control DNA was taken through the fragmentation tuning protocol at varied time points and Bioanalyzer profiles are shown in **Figure 4** as a reference.

[FU]

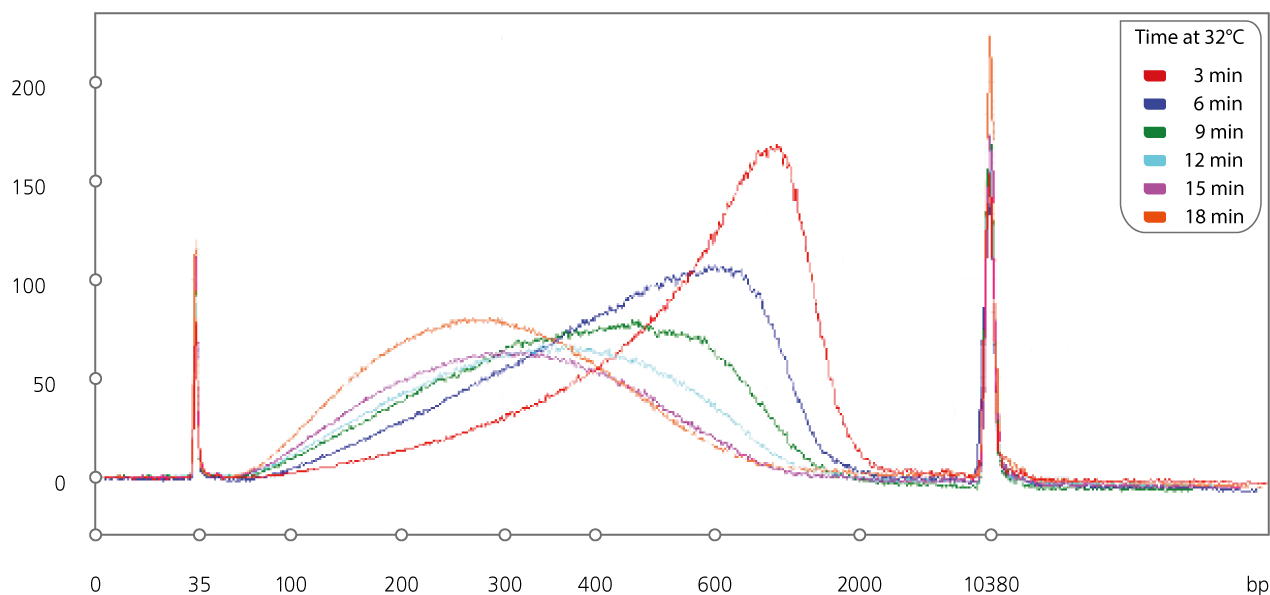


Figure 4: Tuning profile of 1,000 ng input control human gDNA run through a fragmentation time course experiment (individual sample fragmentation profiles may vary).

Appendix C: Guidance on Adapter Concentrations

It is recommended to perform serial dilutions of the adapters. UDI Dilution Buffer or 10 mM Tris-HCl pH 8.0, 50 mM NaCl, 0.5 mM EDTA can be used for adapter dilution. Optimal dilutions may vary depending on the nature of your samples and NGS sequencing operations. Use the following example showing preparation of 1:2, 1:25 and 1:500 dilutions as a general guideline.

Prepare a **1:2 dilution** by adding 5 µl of the adapters (stock) to 5 µl of UDI Dilution Buffer.

Prepare a **1:25 dilution** by adding 2 µl of the adapters (stock) adapters to 48 µl of UDI Dilution Buffer.

Prepare a **1:500 dilution** by adding 2 µl of the diluted (1:25) adapters to 38 µl of UDI Dilution Buffer.

Determining the correct concentration of adapters during ligation is critical for high quality sequencing data. A low concentration of adapters during ligation will impact overall library yields. A high concentration of adapters results in the dimerization of adapters as they ligate to one another. Presence of adapter dimers in the final library may negatively impact sequencing run data quality and lower sample data yield.

With the range of DNA input amounts and range of tunable insert sizes, it is recommended that the adapter concentration be adjusted accordingly. Generally, increasing the input amount of DNA and/or tuning to smaller insert sizes, increase the concentration of adapters required. Both result in an increased concentration of DNA available for ligation. Decreasing the input amount of DNA and/or tuning to larger insert sizes will require lower adapter concentration in comparison.

Titration of adapters is recommended to find the optimal adapter concentration to your specified insert size and input amount.

Libraries with adapters added at low concentrations in the ligation step will report lower than expected yields in qPCR when compared to yields estimated from trace analysis and Qubit. Sequencing of these libraries may result in lower than expected coverage, depth of coverage and uniformity.

Libraries with adapters added with high concentrations in ligation step are characterized with defined peak at 120 - 150 bp in fragment analysis traces. Sequencing of libraries with adapter dimers present may negatively impact sequencing run data accuracy, or even cause an instrument error, terminating the run. Completed run data sets will see an over representation of the adapter reads, a smaller DNA fragments preferentially cluster to the flow cell.

Adapter dimers can be removed from the final library products via bead cleanup. Adapter dimers can be removed with 0.9X (beads to sample) sparQ PureMag Beads clean up.

[sparQ UDI Barcodes by plate location](#)

		1	2	3	4	5	6	7	8	9	10	11	12
A	17	TGAACGTTG	GAGCCAAGT	TGCATAGCT	CACTGCTATT	GATTGAGTTC	AGGCCTACAT	AGGATGTCCA	CCTCGGAATG	ATGACTCGAA	ACGTTGACTC	CCTCATTAA	CTGATGATC
	15	ATGGCCGACT	AGGCACCTTC	AGCCATAACA	CATTCTTGA	GCCAGTCGTT	AGAATCTGG	TTGTAGAAGG	CGCTAAGGT	CGCTCGTTAG	GTGAGATTC	ATGGAATGGA	TTGACTCCA
B	17	ACCAGACTG	AAGGCCGTAG	AACCTTCTCG	AATGGTAGGT	GTAATGCCAA	TGTGGAACCG	CACCTTATGT	GTTCTGGAAC	GAACAATCCT	CCACTTAACA	AGTCGCGGTT	ACTAGGTGTT
	15	CGATGAGCAC	CTGTTGGTAA	CCACAAGTGG	ATGCAAGGTT	TGCCTTGTG	CATTGACTCT	CCTAGCACTA	GAGGTGAACA	AACAACGCTG	TGTGTGCGGA	CATTCTCAC	GTGCACATA
C	17	ACTGGCGAAC	TTAGAGAAGC	AAGAGATCAC	GATACCTATG	TCGTTGCGCT	CGTATTAAGC	AAGCGGCTGT	AGATTCACCA	TGGCAAGGAG	AGCAGTTCCT	CTCATCCAGG	CTGTTAGCGG
	15	GATAAGTCGA	GCTGGTACCT	GTTATCACAC	CGCCAGACAA	CTATCCGCTG	GC GGCTTCAA	ATCGTGTCT	TCAGAACTAC	CGCGGCTATT	GTTGCGCGAA	GCATAGGAAG	AGGACAAGTA
D	17	GC GTTAGGCA	TCTAAGACCA	GCCTGAAGGA	CACTAGGTAC	AGGTGAGTAT	CCAAGTGTTA	TTCTGTGAG	TCGGTCAGAT	GAATATTGCG	TCGCCTTCGT	TGTGGTTGAA	ATCGACCCAA
	15	TCACGCCTTG	TAAGGAGCGG	TACCGTCTCT	GAAGGTTGCG	AATGCCGGAA	TTATGGTCTC	CCAAGTTATC	CGGATATTGA	GCTCGACACA	AGCTGTATTG	TGTTCTGTT	CCGATTCGAG
E	17	TTATCGGCT	TGTAACCACT	ATTGTGCTT	AGCTCGTTCA	TCGATAATGG	GC GTTCGAGT	AGTACAGTTC	CACCTCTGCT	CCGGAACCTA	TAGGACTGCG	TTATCGTGG	CTTACTTGT
	15	AGGAACACAA	AATCGTCCA	AGGCGTTAGG	TCGCATCACG	CGGTATCCG	CGTAACCAGG	GAAGCCAAGG	AGGAGTAGAT	TTCTCCAAC	CAGCGGATGA	TAAGACCGTT	GTAGGAAGTT
F	17	GAGGTATAAG	CCGACACAAG	TCCTCTACCG	TGTCAGTCTT	GCGTCTCTC	CCCTCCGGTT	TACAGCCTCA	GTTGTCCAG	ACTGTTCGG	TCCGAGCGAA	GC GAATGAT	CCTAATGCG
	15	CTCAGTAGGC	CTCCTAATG	CCGTAACGTC	CCGGTCATGA	GCGGAAGAGT	AGCTCAGATA	TGGAGTTCAA	CCGCCGAATA	TTGGCGGTTG	GTCCTGGAT	ATGTACCAG	TACTACTAGA
G	17	TCAAGGATTC	CTCTGATGGC	TACCATGAAC	GATGAACAGT	GTCTCTGCA	CACAAGACGG	GTCTATTGG	AGCTCGAAGC	CAAGTCCAAT	TTCGGTTGTT	GTCAAGCTCG	TCTCGCCTAG
	15	GAAGTGCCCT	GCCTCATAAT	GTAATAGCCA	ATTCAACAAGC	TTGGTTAGTC	CCGGTTTAC	CTTCAATCT	GAGTCTATAC	AACAGGCAAT	TCTAGATGCT	CCGACAGCTT	ATGACCTTGA
H	17	CGAACCCGAGA	CGGCCTGTTA	CATTGGCAGA	ACAATCGCGG	GAGCTTCAAT	GCTTACACAC	ATATACCGGT	AGAGGTTCTA	AACCGCAAGG	ACAGGAGGAA	TAGAGTTGGA	TCTTACAGAGA
	15	TCTCTCGCT	TGTATTGAGC	TAGCGCCGAT	CAACCTGTAA	TTCAGTGTGA	GACCTAACCT	ATCTGCGGTG	TTATTACCGG	CAGAATGGCG	CGAGCCACAT	GACGATATGA	CTACGTGACG



Below are recommendations for adapter concentrations of various vendors at 250 bp inserts.

DNA Input (250 bp Fragments)	Adapter concentration in Ligation (sparQ UDI)
500 ng	125 to 500 nM
100 ng	75 to 300 nM
10 ng	10 to 25 nM
1 ng	0.2 to 1 nM

DNA Input (250 bp Fragments)	Adapter concentration in Ligation (IDT UDI)
500 ng	375 to 750 nM
100 ng	375 to 750 nM
10 ng	25 to 50 nM
1 ng	0.2 to 1 nM

DNA Input (250 bp Fragments)	Adapter volume in Ligation (Illumina TruSeq™)
500 ng	5 to 7.5 μ L *
100 ng	5 to 7.5 μ L *
10 ng	1 to 2.5 μ L
1 ng	2.5 μ L **

*One or two extra cycles of PCR recommended.

** For 1 ng input, it is recommended to dilute Illumina TruSeq adapters to 0.2x-0.1x for the ligation step.

Appendix D: Size selection with sparQ PureMag Beads

Depending on the specific application, size selection may be required to ensure the DNA insert size falls into a certain range. The ligation reaction buffer can greatly influence the size selection range so initial purification using the sparQ PureMag Beads before size selection is recommended (step 1.1- 1.7 below). If size selection without initial purification is preferred, the required amount of beads should be determined empirically.

The following size selection protocol is for libraries with a fragment size range of 250-500 bp. For libraries with different size distribution, refer to the table below for adjustments to bead ratios. The protocol and guidelines are based on double-sided size selection of adapter ligated DNA with Y-shaped adapters attached in a starting volume of 100 μ l.

The size range reflects the final fragment size and insert size based on sparQ UDI Adapters. If calculating the insert size with different adapters, please take into account that the adapter size and configuration both have a significant impact on the size of the fragment appearing on the Bioanalyzer or other size differentiation and detection instruments.

	Target insert size	200 bp	350 bp	550 bp
Volume sparQ PureMag Beads (μ L)	Initial cleanup	80	80	80
	1 st binding	32.5	27.5	25
	2 nd binding	10	7.5	7.5
Final DNA fragment range		250-500 bp	450-600 bp	500-800 bp

1. Initial cleanup

- 1.1. Equilibrate the sparQ PureMag Beads to room temperature (RT) for 20 min.
- 1.2. Thoroughly vortex the sparQ PureMag Beads slurry and add **80 μ l** (0.8X) to the ligation sample from step 10 (main protocol). Mix well by pipetting.
- 1.3. Incubate the mixture for 5 min at RT. Pellet the beads on a magnetic stand and carefully remove and discard the supernatant.
- 1.4. Keeping the tube on the magnetic stand, gently pipette **200 μ l** of the freshly prepared 80% ethanol over the bead pellet to wash. Pellet the beads on the magnetic stand for 30 s then carefully remove and discard the supernatant. Repeat the wash for a total of two washes.
- 1.5. Use a 10 μ l pipette to remove any excess ethanol from the bottom of the tube.



- 1.6. Air-dry the beads on the magnetic stand for 5 - 10 min or until the beads the bead pellet appears matte and no longer shiny. Over-drying of beads may result in lower DNA recovery.
- 1.7. Resuspend the dried beads in **53 μ l** of 10 mM Tris-HCl, pH 8.0. Incubate the beads at room temperature for 2 - 3 min. Pellet the beads on the magnetic stand. Carefully transfer **50 μ l** of supernatant into a new tube.

2. First Binding

- 2.1. Thoroughly vortex the sparQ PureMag Beads slurry and add **32.5 μ l** (0.65X) to the eluted DNA from step 1.7. Mix well by pipetting.
- 2.2. Incubate the mixture for 5 min at RT. Pellet the beads on the magnetic stand until the liquid is clear. **DO NOT discard supernatant.**
- 2.3. Transfer all supernatant to a new tube. Be careful not to carry any beads into the new tube. Discard the beads.

3. Second Binding

- 3.1. Add **10 μ l** (0.85X) of new beads into the tube containing the supernatant from step 2.3 and mix thoroughly by vortexing or pipetting up and down several times with pipette set at 100 μ l. To ensure that the accurate amount of beads is added, take extra caution during pipetting and mixing as the solution can be viscous to handle.
- 3.2. Incubate the mixture for 5 min at RT. Pellet the beads on the magnetic stand until the liquid is clear. Carefully **discard the supernatant**. Retain the beads.
- 3.3. Keep the tube on the magnetic stand gently pipette **200 μ l** of the freshly-prepared 80% ethanol over the bead pellet to wash. Incubate for 30 s to allow the beads to re-form into a pellet.
- 3.4. Carefully remove and discard the supernatant. Repeat the wash for a total of two washes.
- 3.5. Use a pipette set to 10 μ l to remove any remaining ethanol from the bottom of the tube.
- 3.6. Air-dry the beads on the magnetic stand for 3 - 5 min or until the beads appear matte and not glossy. Over-drying of beads may result in lower DNA recovery.
- 3.7. **If optional library amplification is intended:** Resuspend the dried beads in **25.5 μ l** of 10 mM Tris-HCl, pH 8.0. Incubate the beads at room temperature for 2-3 min. Pellet the beads on the magnetic stand. Carefully transfer **23.5 μ l** of supernatant into a new thin-walled PCR tube and proceed to library amplification (step 18, main protocol). If not proceeding immediately, the sample can be stored at -20°C .

If library amplification is not intended: Resuspend the dried beads in **12.5 μ l** of 10 mM Tris-HCl, pH 8.0. Incubate the beads at room temperature for 2 - 3 min. Pellet the beads on the magnetic stand. Carefully transfer **10 μ l** of supernatant into a new thin-walled PCR tube and proceed to validation and quantification of the library using gel electrophoresis, qPCR and/or Bioanalyzer. An additional 1X sparQ PureMag Beads purification may be added if significant adapter and/or adapter dimer are detected. If not proceeding immediately, the sample can be stored at -20°C .

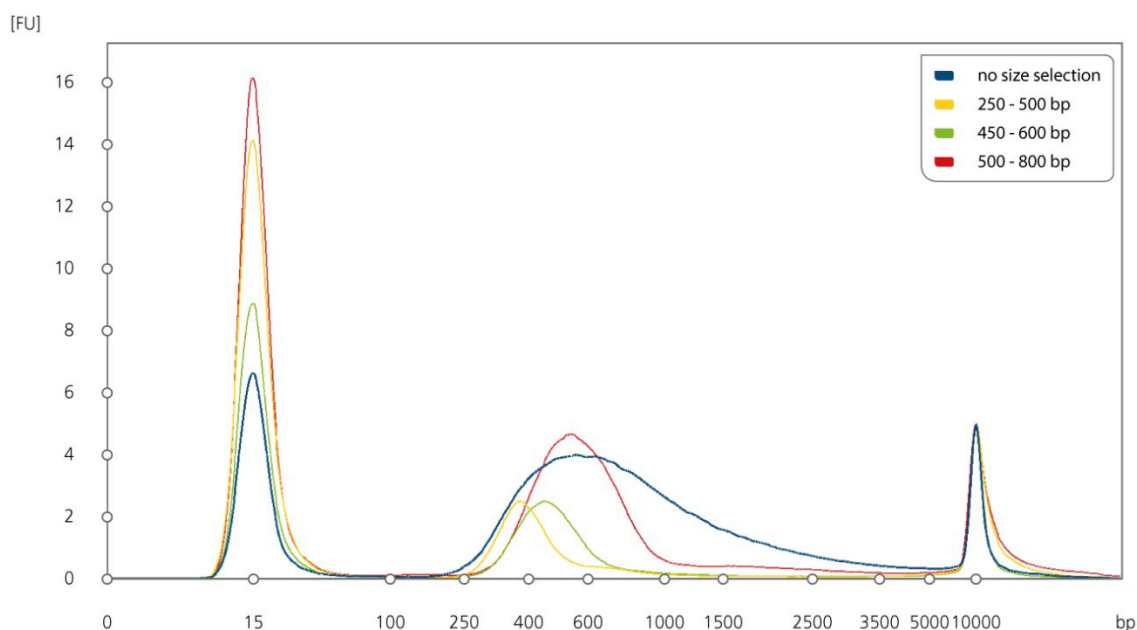


Figure 5: Example TapeStation traces of size selected DNA. Initial clean-up (0.8X) was carried out on adapter-ligated DNA (blue), then size-selected according to the volumes listed on page 17 for a target fragment range of 250- 500 bp (yellow), 450- 600 bp (green) or 500- 800 bp (red).



NGS products used in protocol sold separately

sparQ PureMag Beads

Cat. No.	95196-005	Size:	5 ml
	95196-060		60 ml
	95196-450		450 ml

The sparQ PureMag Beads is a fast and reliable nucleic acid purification system for reaction cleanup and size selection in NGS workflows. It can be used to quickly remove primers, primer-dimers, unincorporated nucleotides, salts, adapters and adapter-dimers from NGS library prep reactions to improve downstream sequencing performance.

sparQ UDI Adapters (1 - 96)

Cat. No.	95211-096	Size:	1 - 96
----------	-----------	-------	--------

The sparQ UDI Adapters are unique dual-indexed barcoded adapters for DNA and RNA libraries for Illumina sequencing platforms. It allows flexible pooling with improved performance by preventing index hopping and enhancing demultiplexing accuracy. The adapters are compatible with both DNA and RNA NGS libraries for various applications.

sparQ Universal Library Quant Kit

Cat. No.	95210-100	Size:	100 reactions
	95210-500		500 reactions
	95210-15B (dilution buffer)		15 ml

The sparQ Universal Library Quant Kit is optimized for rapid, sensitive, and accurate quantification of NGS libraries of various sizes and GC-contents. The kit uses fast cycling protocol, allowing results to be achieved in 40 minutes versus 1 hour and 20 minutes with other NGS library quantification kits.

Related NGS Products Sold Separately

sparQ DNA Library Prep Kit

Cat. No.	95191-024	Size:	24 reactions
	95191-096		96 reactions

The sparQ DNA Library Prep Kit is optimized for the rapid construction of DNA libraries from fragmented double-stranded DNA for sequencing on Illumina® NGS platforms. The simplified protocol speeds up library prep to 2.5 hours with minimal hands-on time and accommodates DNA input amounts from 250 pg to 1 µg.

sparQ HiFi PCR Master Mix

Cat. No.	95192-050	Size:	50 reactions
	95192-250		250 reactions

The sparQ HiFi PCR Master Mix is a high efficiency, high-fidelity, and low-bias PCR master mix for NGS workflows requiring DNA library amplification prior to sequencing. The included primer mix allows amplification of DNA libraries flanked by adapters containing the P5 and P7 Illumina® flow cell sequences.